

# IHC*easy* NCF2 Ready-To-Use IHC Kit

Catalog Number: **KHC2200**

## General Information

**Sample type:**  
FFPE tissue

**Cited sample type:**

**Reactivity:**  
Human, Mouse, Rat

**Cited Reactivity:**

**Assay type:**  
Immunohistochemistry

**Primary antibody type:**  
Mouse Monoclonal

**Secondary antibody type:**  
Polymer-HRP-Goat anti-Mouse

## Kit Component

Component	Size	Concentration
Antigen Retrieval Buffer	100 mL	50×
Washing Buffer	100 mL ×2	20×
Blocking Buffer	5 mL	RTU
Primary Antibody	5 mL	RTU
Secondary Antibody	5 mL	RTU
Chromogen Component A	0.2 mL	RTU
Chromogen Component B	4 mL	RTU
Signal Enhancer	5 mL	RTU
Counter Staining Reagent	5 mL	RTU
Mounting Media	5 mL	RTU
Control Slide	1 slide (Optional)	FFPE
Datasheet	1 Copy	
Manual	1 Copy	

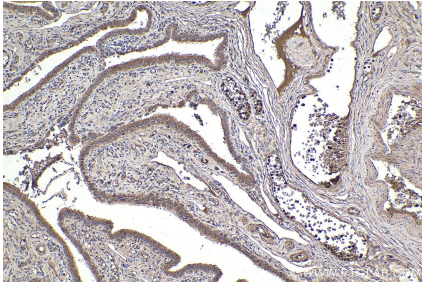
## Storage Instructions

All the reagents are stored at 2-8°C. The kit is stable for 6 months from the date of receipt.

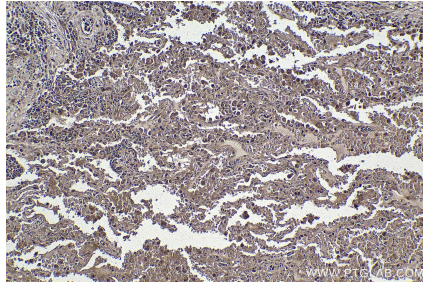
## Background

NOXA2/p67phox is also named as NCF2 (Neutrophil cytosol factor 2) and belongs to the NCF2/NOXA1 family. It is a membrane bound cytochrome b558 required for activation of the latent NADPH oxidase. NCF2 is an essential component of the multi-protein NADPH oxidase enzyme in phagocytic leukocytes, as well as in certain non-phagocytic cells.

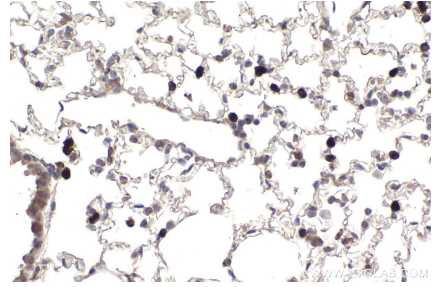
## Selected Validation Data



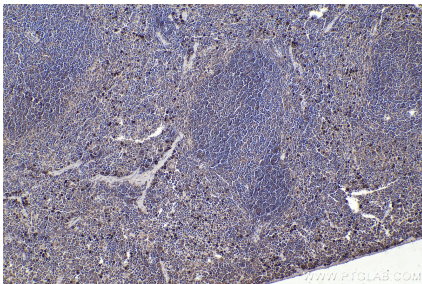
Immunohistochemical analysis of paraffin-embedded human ovary tumor tissue slide using KHC2200 (NCF2 IHC Kit).



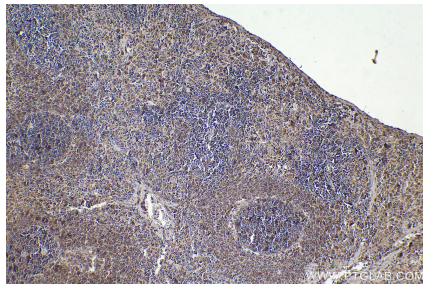
Immunohistochemical analysis of paraffin-embedded human lung tissue slide using KHC2200 (NCF2 IHC Kit).



Immunohistochemical analysis of paraffin-embedded mouse lung tissue slide using KHC2200 (NCF2 IHC Kit).



Immunohistochemical analysis of paraffin-embedded mouse spleen tissue slide using KHC2200 (NCF2 IHC Kit).



Immunohistochemical analysis of paraffin-embedded rat spleen tissue slide using KHC2200 (NCF2 IHC Kit).