

IHC*easy* RAC2 Ready-To-Use IHC Kit

Catalog Number: **KHC2189**

General Information

Sample type:
FFPE tissue

Cited sample type:

Reactivity:
Human, Mouse, Rat

Cited Reactivity:

Assay type:
Immunohistochemistry

Primary antibody type:
Rabbit Polyclonal

Secondary antibody type:
Polymer-HRP-Goat anti-Rabbit

Kit Component

Component	Size	Concentration
Antigen Retrieval Buffer	100 mL	50×
Washing Buffer	100 mL × 2	20×
Blocking Buffer	5 mL	RTU
Primary Antibody	5 mL	RTU
Secondary Antibody	5 mL	RTU
Chromogen Component A	0.2 mL	RTU
Chromogen Component B	4 mL	RTU
Signal Enhancer	5 mL	RTU
Counter Staining Reagent	5 mL	RTU
Mounting Media	5 mL	RTU
Control Slide	1 slide (Optional)	FFPE
Datasheet	1 Copy	
Manual	1 Copy	

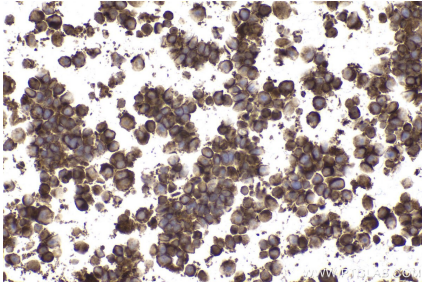
Storage Instructions

All the reagents are stored at 2-8°C. The kit is stable for 6 months from the date of receipt.

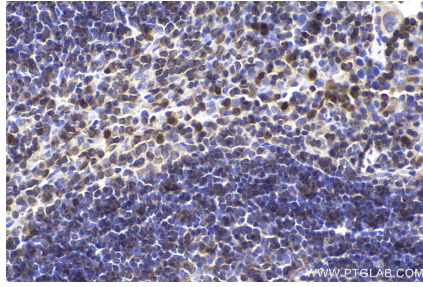
Background

RAC2, also named as GX, belongs to the small GTPase superfamily and Rho family. RAC2 is a plasma membrane-associated small GTPase which cycles between an active GTP-bound and inactive GDP-bound state. In active state binds to a variety of effector proteins to regulate cellular responses, such as secretory processes, phagocytosis of apoptotic cells and epithelial cell polarization. RAC2 augments the production of reactive oxygen species (ROS) by NADPH oxidase. Defects in RAC2 are the cause of neutrophil immunodeficiency syndrome.

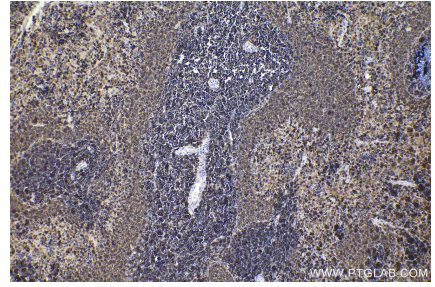
Selected Validation Data



Immunohistochemical analysis of paraffin-embedded MJ cells slide using KHC2189 (RAC2 IHC Kit).



Immunohistochemical analysis of paraffin-embedded mouse spleen tissue slide using KHC2189 (RAC2 IHC Kit).



Immunohistochemical analysis of paraffin-embedded rat spleen tissue slide using KHC2189 (RAC2 IHC Kit).