

IHC*easy* FH Ready-To-Use IHC Kit

Catalog Number: **KHC2167**

General Information

Sample type:
FFPE tissue

Cited sample type:

Reactivity:
Human, Mouse, Rat

Cited Reactivity:

Assay type:
Immunohistochemistry

Primary antibody type:
Rabbit Recombinant

Secondary antibody type:
Polymer-HRP-Goat anti-Rabbit

Kit Component

| Component | Size | Concentration |
|--------------------------|--------------------|---------------|
| Antigen Retrieval Buffer | 100 mL | 50× |
| Washing Buffer | 100 mL ×2 | 20× |
| Blocking Buffer | 5 mL | RTU |
| Primary Antibody | 5 mL | RTU |
| Secondary Antibody | 5 mL | RTU |
| Chromogen Component A | 0.2 mL | RTU |
| Chromogen Component B | 4 mL | RTU |
| Signal Enhancer | 5 mL | RTU |
| Counter Staining Reagent | 5 mL | RTU |
| Mounting Media | 5 mL | RTU |
| Control Slide | 1 slide (Optional) | FFPE |
| Datasheet | 1 Copy | |
| Manual | 1 Copy | |

Storage Instructions

All the reagents are stored at 2-8°C. The kit is stable for 6 months from the date of receipt.

Background

FH(fumarate hydratase) belongs to the class-II fumarase/aspartase family. It is an enzymatic component of the tricarboxylic acid cycle, catalyzing the conversion of fumarate to malate. FH also acts as a tumor suppressor function of FH in sporadic kidney cancer. Mutations in this gene can cause fumarase deficiency and lead to progressive encephalopathy.

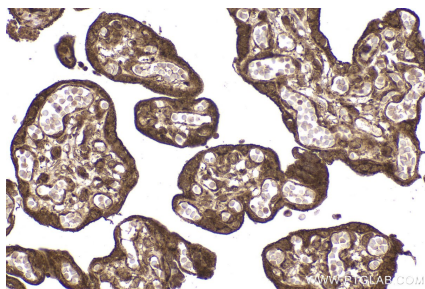
Synonyms

FH, Fumarase, fumarate hydratase, HLRCC, LRCC, MCL, MCUL1

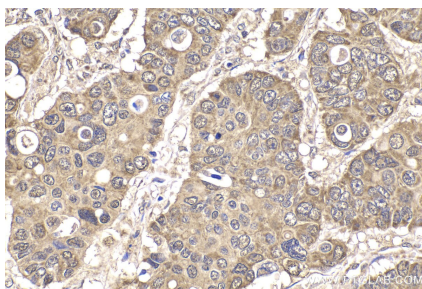
For technical support and original validation data for this product please contact:
T: 1 (888) 4PTGLAB (1-888-478-4522) (toll free in USA), or 1(312) 455-8498 (outside USA)
E: proteintech@ptglab.com
W: ptglab.com

This product is exclusively available under Proteintech Group brand and is not available to purchase from any other manufacturer.

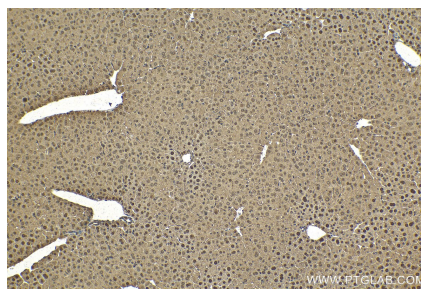
Selected Validation Data



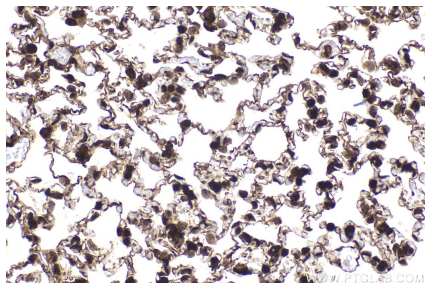
Immunohistochemical analysis of paraffin-embedded human placenta tissue slide using KHC2167 (FH IHC Kit).



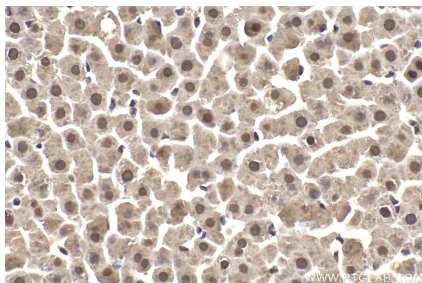
Immunohistochemical analysis of paraffin-embedded human stomach cancer tissue slide using KHC2167 (FH IHC Kit).



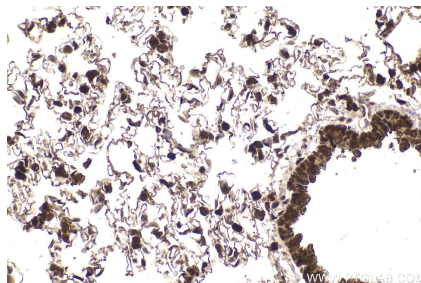
Immunohistochemical analysis of paraffin-embedded mouse liver tissue slide using KHC2167 (FH IHC Kit).



Immunohistochemical analysis of paraffin-embedded mouse lung tissue slide using KHC2167 (FH IHC Kit).



Immunohistochemical analysis of paraffin-embedded rat liver tissue slide using KHC2167 (FH IHC Kit).



Immunohistochemical analysis of paraffin-embedded rat lung tissue slide using KHC2167 (FH IHC Kit).