

## IHC*easy* CYP1A1 Ready-To-Use IHC Kit

Catalog Number: **KHC2157**

### General Information

**Sample type:**  
FFPE tissue

**Cited sample type:**

**Reactivity:**  
Human, Mouse, Rat

**Cited Reactivity:**

**Assay type:**  
Immunohistochemistry

**Primary antibody type:**  
Rabbit Polyclonal

**Secondary antibody type:**  
Polymer-HRP-Goat anti-Rabbit

### Kit Component

Component	Size	Concentration
Antigen Retrieval Buffer	100 mL	50×
Washing Buffer	100 mL ×2	20×
Blocking Buffer	5 mL	RTU
Primary Antibody	5 mL	RTU
Secondary Antibody	5 mL	RTU
Chromogen Component A	0.2 mL	RTU
Chromogen Component B	4 mL	RTU
Signal Enhancer	5 mL	RTU
Counter Staining Reagent	5 mL	RTU
Mounting Media	5 mL	RTU
Control Slide	1 slide (Optional)	FFPE
Datasheet	1 Copy	
Manual	1 Copy	

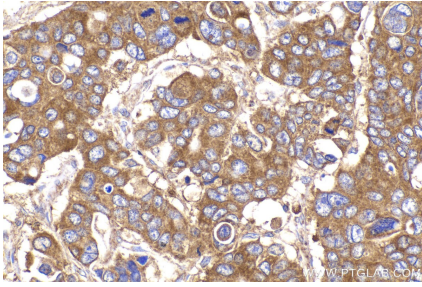
### Storage Instructions

All the reagents are stored at 2-8°C. The kit is stable for 6 months from the date of receipt.

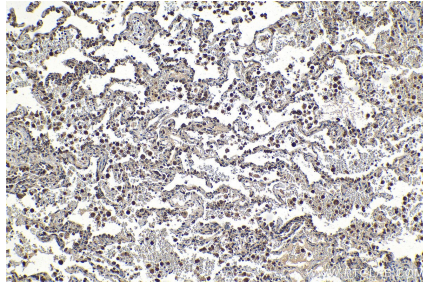
### Synonyms

AHH, AHRR, CP11, CYP1, CYP1A1, CYP1A1, CYP1A1, Cytochrome P450 1A1, Cytochrome P450 C, Cytochrome P450 form 6, Cytochrome P450 P1, P1 450, P450 C, P450DX

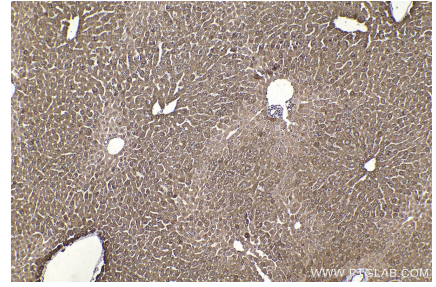
## Selected Validation Data



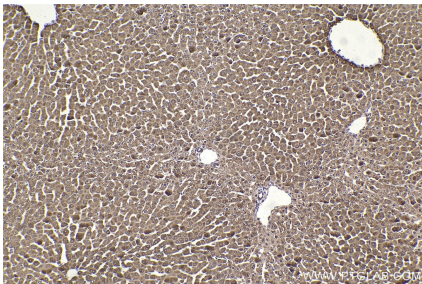
Immunohistochemical analysis of paraffin-embedded human stomach cancer tissue slide using KHC2157 (CYP1A1 IHC Kit).



Immunohistochemical analysis of paraffin-embedded human lung tissue slide using KHC2157 (CYP1A1 IHC Kit).



Immunohistochemical analysis of paraffin-embedded mouse liver tissue slide using KHC2157 (CYP1A1 IHC Kit).



Immunohistochemical analysis of paraffin-embedded rat liver tissue slide using KHC2157 (CYP1A1 IHC Kit).