

IHC*easy* CDK14/PFTK1 Ready-To-Use IHC Kit

Catalog Number: **KHC2130**

General Information

Sample type:
FFPE tissue

Cited sample type:

Reactivity:
Human, Mouse, Rat

Cited Reactivity:

Assay type:
Immunohistochemistry

Primary antibody type:
Rabbit Polyclonal

Secondary antibody type:
Polymer-HRP-Goat anti-Rabbit

Kit Component

Component	Size	Concentration
Antigen Retrieval Buffer	100 mL	50×
Washing Buffer	100 mL ×2	20×
Blocking Buffer	5 mL	RTU
Primary Antibody	5 mL	RTU
Secondary Antibody	5 mL	RTU
Chromogen Component A	0.2 mL	RTU
Chromogen Component B	4 mL	RTU
Signal Enhancer	5 mL	RTU
Counter Staining Reagent	5 mL	RTU
Mounting Media	5 mL	RTU
Control Slide	1 slide (Optional)	FFPE
Datasheet	1 Copy	
Manual	1 Copy	

Storage Instructions

All the reagents are stored at 2-8°C. The kit is stable for 6 months from the date of receipt.

Background

PFTK1 is a Cdc2-related protein kinase, also named as PFTAIRE1, CDK14 and belongs to the CMGC Ser/Thr protein kinase family and CDC2/CDKX subfamily. It acts as a cyclin-dependent kinases that regulates cell cycle progression and cell proliferation. The PFTK1 protein shows high homology with mouse Pftaire1, a Cdc2-related protein expressed primarily in the postnatal and adult nervous system. The protein contains 2 predicted nuclear localization signals that the N-terminal nuclear localization signals do not play a role in vivo. It has 3 isoforms produced by alternative splicing. Primary antibody in this kit is specific to PFTK1.

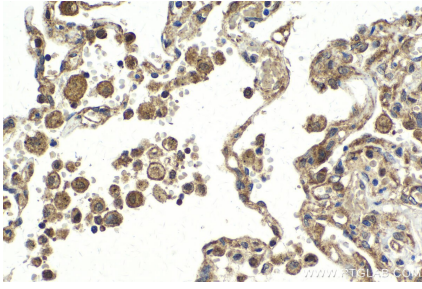
Synonyms

CDK14, hPFTAIRE1, KIAA0834, PFTAIRE protein kinase 1, PFTAIRE1, PFTK1

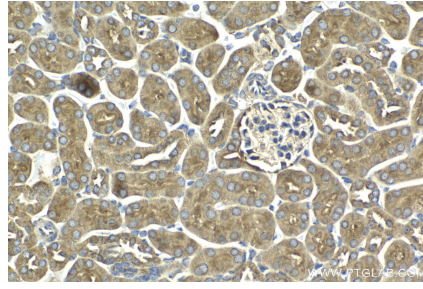
For technical support and original validation data for this product please contact:
T: 1 (888) 4PTGLAB (1-888-478-4522) (toll free in USA), or 1(312) 455-8498 (outside USA)
E: proteintech@ptglab.com
W: ptglab.com

This product is exclusively available under Proteintech Group brand and is not available to purchase from any other manufacturer.

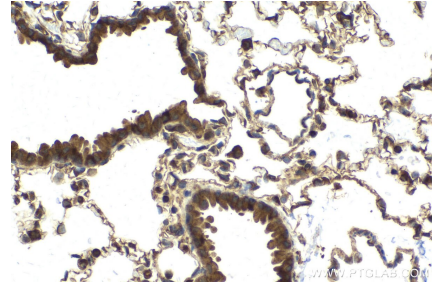
Selected Validation Data



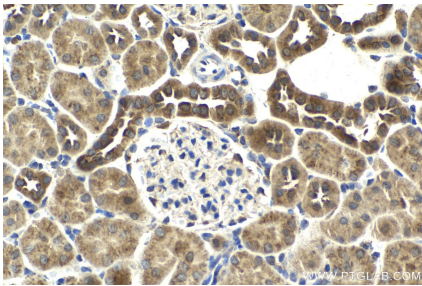
Immunohistochemical analysis of paraffin-embedded human lung tissue slide using KHC2130 (CDK14/PFTK1 IHC Kit).



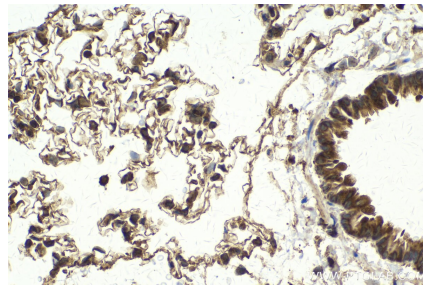
Immunohistochemical analysis of paraffin-embedded mouse kidney tissue slide using KHC2130 (CDK14/PFTK1 IHC Kit).



Immunohistochemical analysis of paraffin-embedded mouse lung tissue slide using KHC2130 (CDK14/PFTK1 IHC Kit).



Immunohistochemical analysis of paraffin-embedded rat kidney tissue slide using KHC2130 (CDK14/PFTK1 IHC Kit).



Immunohistochemical analysis of paraffin-embedded rat lung tissue slide using KHC2130 (CDK14/PFTK1 IHC Kit).