

# IHC*easy* TPPP Ready-To-Use IHC Kit

Catalog Number: **KHC2129**

## General Information

**Sample type:**  
FFPE tissue

**Cited sample type:**

**Reactivity:**  
Human, Mouse, Rat

**Cited Reactivity:**

**Assay type:**  
Immunohistochemistry

**Primary antibody type:**  
Mouse Monoclonal

**Secondary antibody type:**  
Polymer-HRP-Goat anti-Mouse

## Kit Component

| Component                | Size               | Concentration |
|--------------------------|--------------------|---------------|
| Antigen Retrieval Buffer | 100 mL             | 50×           |
| Washing Buffer           | 100 mL ×2          | 20×           |
| Blocking Buffer          | 5 mL               | RTU           |
| Primary Antibody         | 5 mL               | RTU           |
| Secondary Antibody       | 5 mL               | RTU           |
| Chromogen Component A    | 0.2 mL             | RTU           |
| Chromogen Component B    | 4 mL               | RTU           |
| Signal Enhancer          | 5 mL               | RTU           |
| Counter Staining Reagent | 5 mL               | RTU           |
| Mounting Media           | 5 mL               | RTU           |
| Control Slide            | 1 slide (Optional) | FFPE          |
| Datasheet                | 1 Copy             |               |
| Manual                   | 1 Copy             |               |

## Storage Instructions

All the reagents are stored at 2-8°C. The kit is stable for 6 months from the date of receipt.

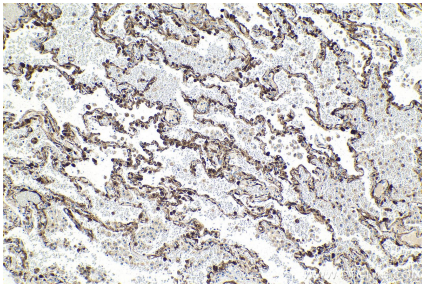
## Background

TPPP, also named as TPPP1, P24 and P25, belongs to the TPPP family. TPPP promotes in vitro the polymerization of tubulin into double-walled tubules and polymorphic aggregates or bundled stabilized microtubules blocks. When overexpressed, TPPP inhibits mitotic spindle assembly and nuclear envelope breakdown, apparently without affecting other cellular events.

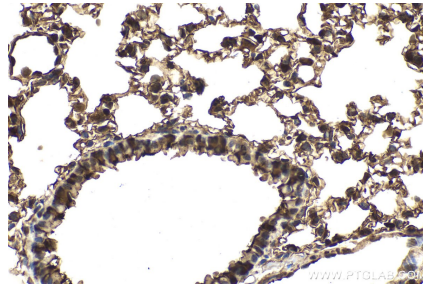
## Synonyms

25 kDa brain specific protein, p24, p25, p25 alpha, p25alpha, TPPP, TPPP/p25, TPPP1

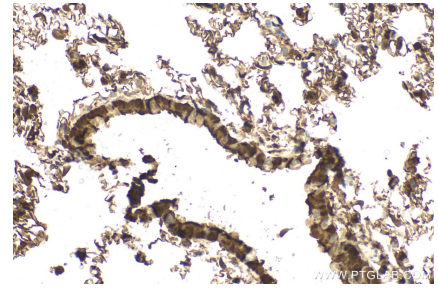
## Selected Validation Data



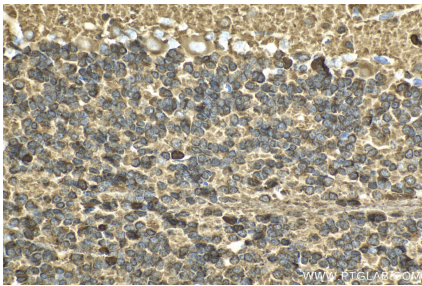
Immunohistochemical analysis of paraffin-embedded human lung tissue slide using KHC2129 (TPPP IHC Kit).



Immunohistochemical analysis of paraffin-embedded mouse lung tissue slide using KHC2129 (TPPP IHC Kit).



Immunohistochemical analysis of paraffin-embedded rat lung tissue slide using KHC2129 (TPPP IHC Kit).



Immunohistochemical analysis of paraffin-embedded rat cerebellum tissue slide using KHC2129 (TPPP IHC Kit).