

IHC*easy* PRKRA Ready-To-Use IHC Kit

Catalog Number: **KHC2115**

General Information

Sample type:
FFPE tissue

Cited sample type:

Reactivity:
Human, Mouse, Rat

Cited Reactivity:

Assay type:
Immunohistochemistry

Primary antibody type:
Mouse Monoclonal

Secondary antibody type:
Polymer-HRP-Goat anti-Mouse

Kit Component

Component	Size	Concentration
Antigen Retrieval Buffer	100 mL	50×
Washing Buffer	100 mL ×2	20×
Blocking Buffer	5 mL	RTU
Primary Antibody	5 mL	RTU
Secondary Antibody	5 mL	RTU
Chromogen Component A	0.2 mL	RTU
Chromogen Component B	4 mL	RTU
Signal Enhancer	5 mL	RTU
Counter Staining Reagent	5 mL	RTU
Mounting Media	5 mL	RTU
Control Slide	1 slide (Optional)	FFPE
Datasheet	1 Copy	
Manual	1 Copy	

Storage Instructions

All the reagents are stored at 2-8°C. The kit is stable for 6 months from the date of receipt.

Background

PRKRA (PKR-associated protein X) is also named as PACT, RAX, HSD-14 and HSD14. PRKRA was significantly overexpressed in PC tissues and promoted the proliferation, migration, and chemoresistance of PC cells. PRKRA activates EIF2AK2/PKR in the absence of double-stranded RNA (dsRNA), leading to phosphorylation of EIF2S1/EIF2-alpha and inhibition of translation and induction of apoptosis. PRKRA has been shown to interact with DICER1. DICER1 and PRKRA expression in normal colon was limited to mucosal epithelium and showed similar cytoplasmic expression.

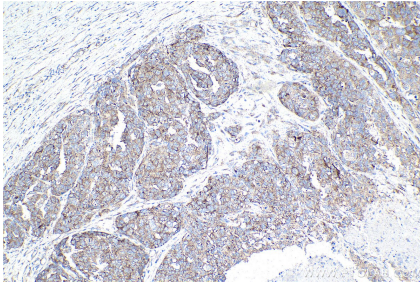
Synonyms

DYT16, HSD 14, HSD14, PACT, PKR associated protein X, PKR associating protein X, PRKRA, RAX

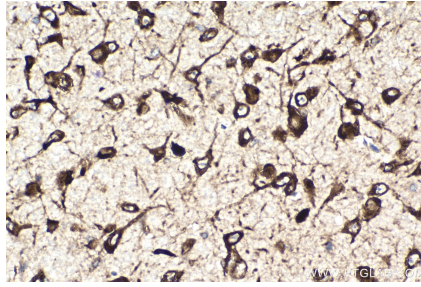
For technical support and original validation data for this product please contact:
T: 1 (888) 4PTGLAB (1-888-478-4522) (toll free in USA), or 1(312) 455-8498 (outside USA)
E: proteintech@ptglab.com
W: ptglab.com

This product is exclusively available under Proteintech Group brand and is not available to purchase from any other manufacturer.

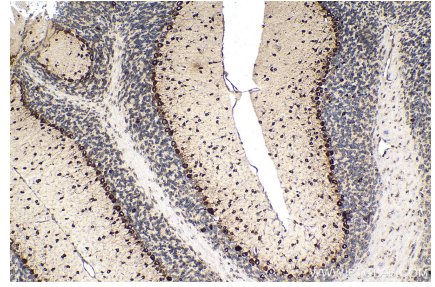
Selected Validation Data



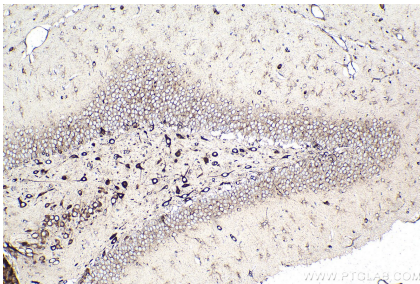
Immunohistochemical analysis of paraffin-embedded human ovary cancer tissue slide using KHC2115 (PRKRA IHC Kit).



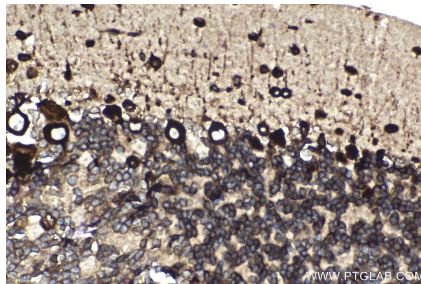
Immunohistochemical analysis of paraffin-embedded mouse brain tissue slide using KHC2115 (PRKRA IHC Kit).



Immunohistochemical analysis of paraffin-embedded mouse cerebellum tissue slide using KHC2115 (PRKRA IHC Kit).



Immunohistochemical analysis of paraffin-embedded rat brain tissue slide using KHC2115 (PRKRA IHC Kit).



Immunohistochemical analysis of paraffin-embedded rat cerebellum tissue slide using KHC2115 (PRKRA IHC Kit).