

IHC*easy* TREM2 Ready-To-Use IHC Kit

Catalog Number: **KHC2085**

General Information

Sample type:
FFPE tissue

Cited sample type:

Reactivity:
Human, Mouse

Cited Reactivity:

Assay type:
Immunohistochemistry

Primary antibody type:
Mouse Monoclonal

Secondary antibody type:
Polymer-HRP-Goat anti-Mouse

Kit Component

Component	Size	Concentration
Antigen Retrieval Buffer	100 mL	50×
Washing Buffer	100 mL ×2	20×
Blocking Buffer	5 mL	RTU
Primary Antibody	5 mL	RTU
Secondary Antibody	5 mL	RTU
Chromogen Component A	0.2 mL	RTU
Chromogen Component B	4 mL	RTU
Signal Enhancer	5 mL	RTU
Counter Staining Reagent	5 mL	RTU
Mounting Media	5 mL	RTU
Control Slide	1 slide (Optional)	FFPE
Datasheet	1 Copy	
Manual	1 Copy	

Storage Instructions

All the reagents are stored at 2-8°C. The kit is stable for 6 months from the date of receipt.

Background

TREM2 (triggering receptor expressed on myeloid cells 2) is a cell surface receptor belongs to TREM family that is expressed on osteoclast, dendritic cells, macrophages, nature killers, neutrophils and microglia. TREM2 is localized predominantly in the Golgi complex, but also shuttles to and from the cell surface in endocytic and exocytic vesicles. TREM2 associates with DAP12 to initiate the intracellular signalling cascade via an immunoreceptor tyrosine-based activation motif (ITAM) domain and tyrosine-kinases. Loss-of-function mutations in either TREM2 or DAP12 can cause Nasu-Hakola disease.

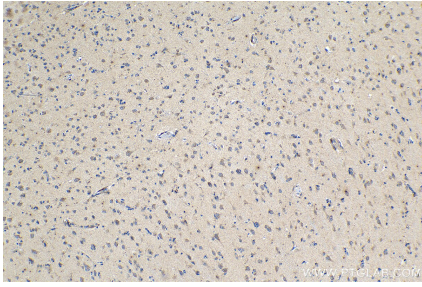
Synonyms

Trem2c, Trem2b, Trem2a, TREM-2, TREM 2

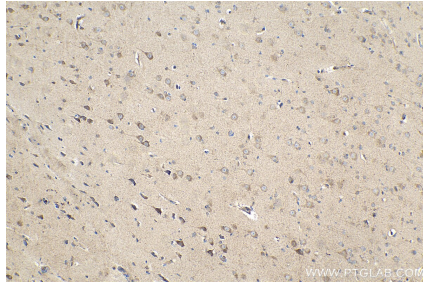
For technical support and original validation data for this product please contact:
T: 1 (888) 4PTGLAB (1-888-478-4522) (toll free in USA), or 1(312) 455-8498 (outside USA)
E: proteintech@ptglab.com
W: ptglab.com

This product is exclusively available under Proteintech Group brand and is not available to purchase from any other manufacturer.

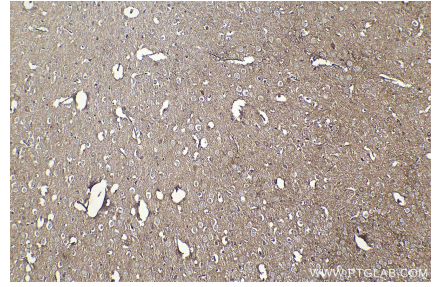
Selected Validation Data



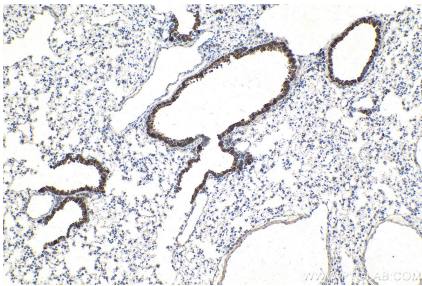
Immunohistochemical analysis of paraffin-embedded human Alzheimer's tissue slide using KHC2085 (TREM2 IHC Kit).



Immunohistochemical analysis of paraffin-embedded human gliomas tissue slide using KHC2085 (TREM2 IHC Kit).



Immunohistochemical analysis of paraffin-embedded mouse brain tissue slide using KHC2085 (TREM2 IHC Kit).



Immunohistochemical analysis of paraffin-embedded mouse lung tissue slide using KHC2085 (TREM2 IHC Kit).