

IHC*easy* IKBKG Ready-To-Use IHC Kit

Catalog Number: **KHC2081**

General Information

Sample type:
FFPE tissue

Cited sample type:

Reactivity:
Human, Mouse, Rat

Cited Reactivity:

Assay type:
Immunohistochemistry

Primary antibody type:
Mouse Monoclonal

Secondary antibody type:
Polymer-HRP-Goat anti-Mouse

Kit Component

Component	Size	Concentration
Antigen Retrieval Buffer	100 mL	50×
Washing Buffer	100 mL × 2	20×
Blocking Buffer	5 mL	RTU
Primary Antibody	5 mL	RTU
Secondary Antibody	5 mL	RTU
Chromogen Component A	0.2 mL	RTU
Chromogen Component B	4 mL	RTU
Signal Enhancer	5 mL	RTU
Counter Staining Reagent	5 mL	RTU
Mounting Media	5 mL	RTU
Control Slide	1 slide (Optional)	FFPE
Datasheet	1 Copy	
Manual	1 Copy	

Storage Instructions

All the reagents are stored at 2-8°C. The kit is stable for 6 months from the date of receipt.

Background

IKBKG, also named as FIP3, NEMO, IKKAP1 and IKKG, is specifically phosphorylate serine or threonine residues that are followed by a proline residue. IKBKG is regulatory subunit of the IKK core complex which phosphorylates inhibitors of NF-kappa-B thus leading to the dissociation of the inhibitor/NF-kappa-B complex and ultimately the degradation of the inhibitor. Its binding to scaffolding polyubiquitin seems to play a role in IKK activation by multiple signaling receptor pathways.

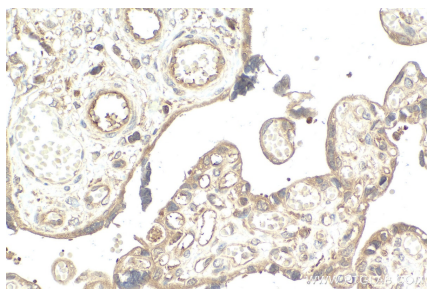
Synonyms

IkB kinase-associated protein 1, I-kappa-B kinase subunit gamma, Fip3p, FIP-3, FIP3

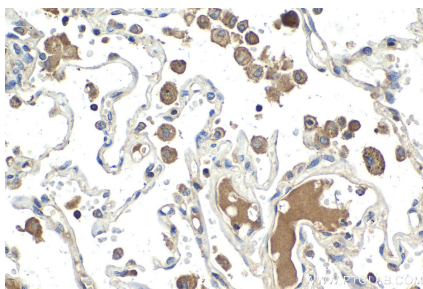
For technical support and original validation data for this product please contact:
T: 1 (888) 4PTGLAB (1-888-478-4522) (toll free in USA), or 1(312) 455-8498 (outside USA)
E: proteintech@ptglab.com
W: ptglab.com

This product is exclusively available under Proteintech Group brand and is not available to purchase from any other manufacturer.

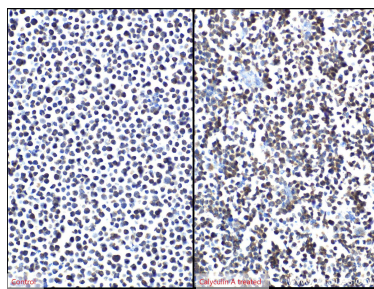
Selected Validation Data



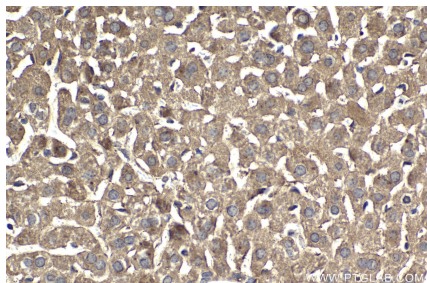
Immunohistochemical analysis of paraffin-embedded human placenta tissue slide using KHC2081 (IKBKG IHC Kit).



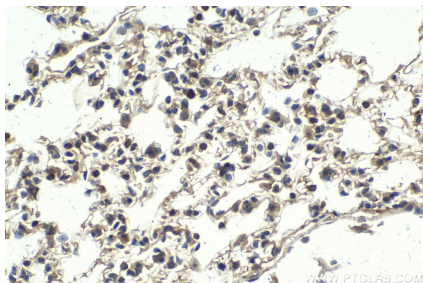
Immunohistochemical analysis of paraffin-embedded human lung tissue slide using KHC2081 (IKBKG IHC Kit).



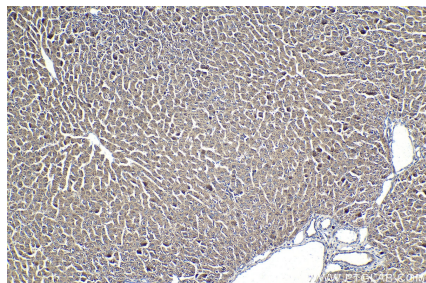
Immunohistochemical analysis of paraffin-embedded Jurkat cells slide using KHC2081 (IKBKG IHC Kit).



Immunohistochemical analysis of paraffin-embedded mouse liver tissue slide using KHC2081 (IKBKG IHC Kit).



Immunohistochemical analysis of paraffin-embedded mouse lung tissue slide using KHC2081 (IKBKG IHC Kit).



Immunohistochemical analysis of paraffin-embedded rat liver tissue slide using KHC2081 (IKBKG IHC Kit).