

# IHC*easy* PSMD12 Ready-To-Use IHC Kit

Catalog Number: **KHC2042**

## General Information

**Sample type:**  
FFPE tissue

**Cited sample type:**

**Reactivity:**  
Human, Mouse, Rat

**Cited Reactivity:**

**Assay type:**  
Immunohistochemistry

**Primary antibody type:**  
Rabbit Polyclonal

**Secondary antibody type:**  
Polymer-HRP-Goat anti-Rabbit

## Kit Component

Component	Size	Concentration
Antigen Retrieval Buffer	100 mL	50×
Washing Buffer	100 mL ×2	20×
Blocking Buffer	5 mL	RTU
Primary Antibody	5 mL	RTU
Secondary Antibody	5 mL	RTU
Chromogen Component A	0.2 mL	RTU
Chromogen Component B	4 mL	RTU
Signal Enhancer	5 mL	RTU
Counter Staining Reagent	5 mL	RTU
Mounting Media	5 mL	RTU
Control Slide	1 slide (Optional)	FFPE
Datasheet	1 Copy	
Manual	1 Copy	

## Storage Instructions

All the reagents are stored at 2-8°C. The kit is stable for 6 months from the date of receipt.

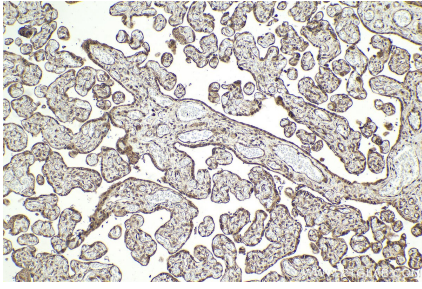
## Background

Proteasome 26S subunit, non-ATPase 12 (PSMD12; also known as RPN5) was first discovered in fission yeast. It is a non-ATPase subunit of the 19S regulator of the 26S proteasome complex, which is involved in regulating the cell cycle, repairing DNA damage, and regulating apoptosis by mediating the internal protein balance through the removal of misfolded proteins or damaged intracellular substructures. In addition, PSMD12 contributes to tumor cell growth and apoptosis in breast cancer.

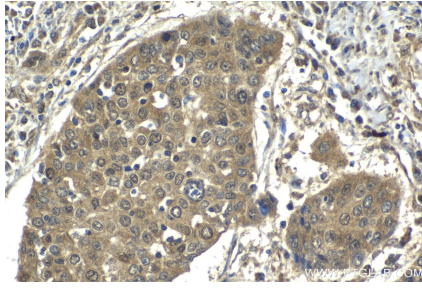
## Synonyms

STISS, Rpn5, p55, 26S proteasome non-ATPase regulatory subunit 12

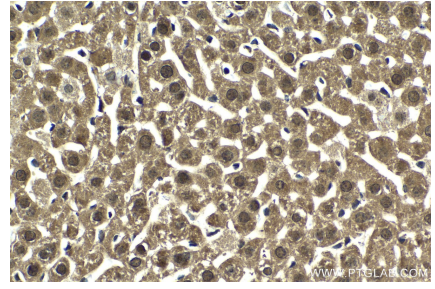
## Selected Validation Data



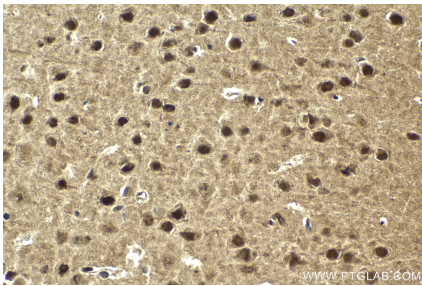
Immunohistochemical analysis of paraffin-embedded human placenta tissue slide using KHC2042 (PSMD12 IHC Kit).



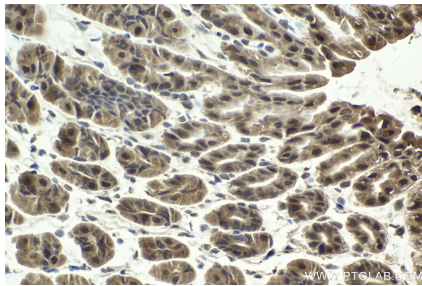
Immunohistochemical analysis of paraffin-embedded human lung cancer tissue slide using KHC2042 (PSMD12 IHC Kit).



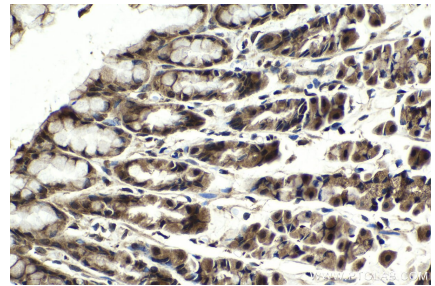
Immunohistochemical analysis of paraffin-embedded mouse liver tissue slide using KHC2042 (PSMD12 IHC Kit).



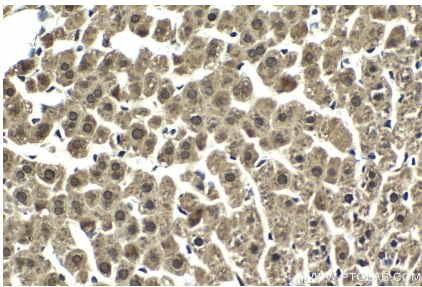
Immunohistochemical analysis of paraffin-embedded mouse brain tissue slide using KHC2042 (PSMD12 IHC Kit).



Immunohistochemical analysis of paraffin-embedded mouse stomach tissue slide using KHC2042 (PSMD12 IHC Kit).



Immunohistochemical analysis of paraffin-embedded rat stomach tissue slide using KHC2042 (PSMD12 IHC Kit).



Immunohistochemical analysis of paraffin-embedded rat liver tissue slide using KHC2042 (PSMD12 IHC Kit).