

IHC*easy* PHF8 Ready-To-Use IHC Kit

Catalog Number: **KHC2008**

General Information

Sample type:
FFPE tissue

Cited sample type:

Reactivity:
Human, Mouse

Cited Reactivity:

Assay type:
Immunohistochemistry

Primary antibody type:
Rabbit Polyclonal

Secondary antibody type:
Polymer-HRP-Goat anti-Rabbit

Kit Component

Component	Size	Concentration
Antigen Retrieval Buffer	100 mL	50×
Washing Buffer	100 mL ×2	20×
Blocking Buffer	5 mL	RTU
Primary Antibody	5 mL	RTU
Secondary Antibody	5 mL	RTU
Chromogen Component A	0.2 mL	RTU
Chromogen Component B	4 mL	RTU
Signal Enhancer	5 mL	RTU
Counter Staining Reagent	5 mL	RTU
Mounting Media	5 mL	RTU
Control Slide	1 slide (Optional)	FFPE
Datasheet	1 Copy	
Manual	1 Copy	

Storage Instructions

All the reagents are stored at 2-8°C. The kit is stable for 6 months from the date of receipt.

Background

Plant homeodomain finger protein 8 (PHF8) is a JmjC domain-containing protein. PHF8 is localized in the nucleolus and may regulate rRNA transcription. As a member of the KDM7 subfamily of enzymes, PHF8 is involved in demethylation of lysine residues in histones such as H3K27me2/1, H3K9me2/1 and H4K20me1. PHF8 has been reported to participate in cancer development and metastasis of various types of tumors.

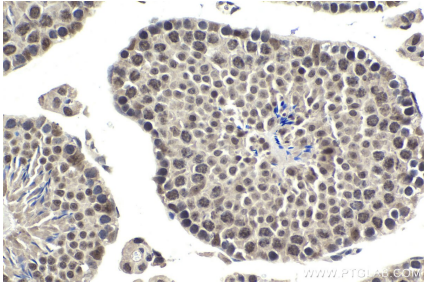
Synonyms

DKFZp686E0868, JHDM1F, KDM7B, KIAA1111, MRXSSD, PHD finger protein 8, PHF8, ZNF422

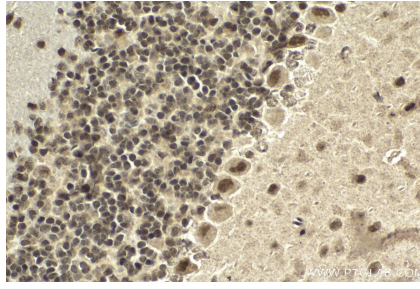
For technical support and original validation data for this product please contact:
T: 1 (888) 4PTGLAB (1-888-478-4522) (toll free in USA), or 1(312) 455-8498 (outside USA)
E: proteintech@ptglab.com
W: ptglab.com

This product is exclusively available under Proteintech Group brand and is not available to purchase from any other manufacturer.

Selected Validation Data



Immunohistochemical analysis of paraffin-embedded mouse testis tissue slide using KHC2008 (PHF8 IHC Kit).



Immunohistochemical analysis of paraffin-embedded mouse cerebellum tissue slide using KHC2008 (PHF8 IHC Kit).