

IHC*easy* GTF3C4 Ready-To-Use IHC Kit

Catalog Number: **KHC1993**

General Information

Sample type:
FFPE tissue

Cited sample type:

Reactivity:
Human, Mouse

Cited Reactivity:

Assay type:
Immunohistochemistry

Primary antibody type:
Rabbit Polyclonal

Secondary antibody type:
Polymer-HRP-Goat anti-Rabbit

Kit Component

Component	Size	Concentration
Antigen Retrieval Buffer	100 mL	50×
Washing Buffer	100 mL ×2	20×
Blocking Buffer	5 mL	RTU
Primary Antibody	5 mL	RTU
Secondary Antibody	5 mL	RTU
Chromogen Component A	0.2 mL	RTU
Chromogen Component B	4 mL	RTU
Signal Enhancer	5 mL	RTU
Counter Staining Reagent	5 mL	RTU
Mounting Media	5 mL	RTU
Control Slide	1 slide (Optional)	FFPE
Datasheet	1 Copy	
Manual	1 Copy	

Storage Instructions

All the reagents are stored at 2-8°C. The kit is stable for 6 months from the date of receipt.

Background

GTF3C4, also named as TFIIC90, is essential for RNA polymerase III to make a number of small nuclear and cytoplasmic RNAs, including 5S RNA, tRNA, and adenovirus-associated (VA) RNA of both cellular and viral origin. It has histone acetyltransferase activity (HAT) with unique specificity for free and nucleosomal H3.

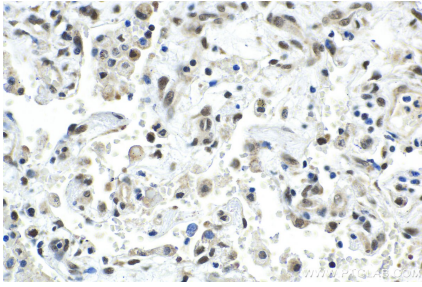
Synonyms

GTF3C4, KAT12, TF3C delta, TFIII90, TFIIC 90 kDa subunit, TFiiiC2 90, TFIIC90, TFIICdelta

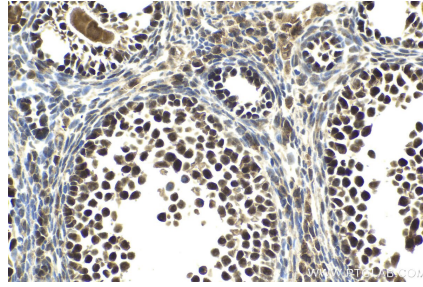
For technical support and original validation data for this product please contact:
T: 1 (888) 4PTGLAB (1-888-478-4522) (toll free in USA), or 1(312) 455-8498 (outside USA)
E: proteintech@ptglab.com
W: ptglab.com

This product is exclusively available under Proteintech Group brand and is not available to purchase from any other manufacturer.

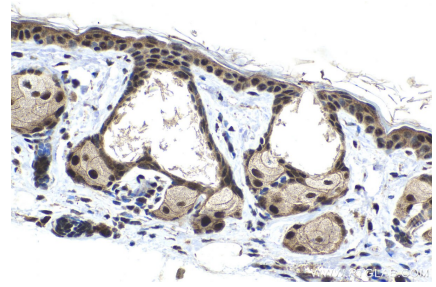
Selected Validation Data



Immunohistochemical analysis of paraffin-embedded human lung tissue slide using KHC1993 (GTF3C4 IHC Kit).



Immunohistochemical analysis of paraffin-embedded mouse ovary tissue slide using KHC1993 (GTF3C4 IHC Kit).



Immunohistochemical analysis of paraffin-embedded mouse skin tissue slide using KHC1993 (GTF3C4 IHC Kit).