

IHC*easy* LIMD1 Ready-To-Use IHC Kit

Catalog Number: **KHC1980**

General Information

Sample type:
FFPE tissue

Cited sample type:

Reactivity:
Human

Cited Reactivity:

Assay type:
Immunohistochemistry

Primary antibody type:
Rabbit Polyclonal

Secondary antibody type:
Polymer-HRP-Goat anti-Rabbit

Kit Component

Component	Size	Concentration
Antigen Retrieval Buffer	100 mL	50×
Washing Buffer	100 mL ×2	20×
Blocking Buffer	5 mL	RTU
Primary Antibody	5 mL	RTU
Secondary Antibody	5 mL	RTU
Chromogen Component A	0.2 mL	RTU
Chromogen Component B	4 mL	RTU
Signal Enhancer	5 mL	RTU
Counter Staining Reagent	5 mL	RTU
Mounting Media	5 mL	RTU
Control Slide	1 slide (Optional)	FFPE
Datasheet	1 Copy	
Manual	1 Copy	

Storage Instructions

All the reagents are stored at 2-8°C. The kit is stable for 6 months from the date of receipt.

Background

LIMD1 is a member of the Ajuba family of LIM domain-containing proteins, these kinds of proteins have been shown to play a role in intracellular signaling, transcriptional regulation and cellular differentiation, proliferation and migration. LIMD1 predominantly localizes to the cytoplasm especially in the E-cadherin cell-cell adhesive junction, yet also translocates to the nucleus when functions as an RB corepressor. And LIMD1 acts as a scaffolding protein to form a PHD-LIMD1-VHL axis, facilitating HIF1 α ubiquitination and degradation by the proteasome. LIMD1 specifically interacts with retinoblastoma protein (pRB), inhibits E2F-mediated transcription, and suppresses the expression of the majority of genes with E2F1-responsive elements. As a tumor suppressor, LIMD1 blocks tumor growth in vitro and in vivo, and is frequently down-regulated in human lung tumors, and it also be detected in normal and breast cancer tissues.

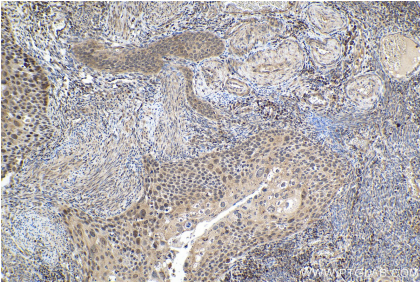
Synonyms

LIM domains containing 1

For technical support and original validation data for this product please contact:
T: 1 (888) 4PTGLAB (1-888-478-4522) (toll free in USA), or 1(312) 455-8498 (outside USA)
E: proteintech@ptglab.com
W: ptglab.com

This product is exclusively available under Proteintech Group brand and is not available to purchase from any other manufacturer.

Selected Validation Data



Immunohistochemical analysis of paraffin-embedded human cervical cancer tissue slide using KHC1980 (LIMD1 IHC Kit).