

IHC*easy* DACT1 Ready-To-Use IHC Kit

Catalog Number: **KHC1972**

General Information

Sample type:
FFPE tissue

Cited sample type:

Reactivity:
Human, Mouse, Rat

Cited Reactivity:

Assay type:
Immunohistochemistry

Primary antibody type:
Rabbit Polyclonal

Secondary antibody type:
Polymer-HRP-Goat anti-Rabbit

Kit Component

Component	Size	Concentration
Antigen Retrieval Buffer	100 mL	50×
Washing Buffer	100 mL ×2	20×
Blocking Buffer	5 mL	RTU
Primary Antibody	5 mL	RTU
Secondary Antibody	5 mL	RTU
Chromogen Component A	0.2 mL	RTU
Chromogen Component B	4 mL	RTU
Signal Enhancer	5 mL	RTU
Counter Staining Reagent	5 mL	RTU
Mounting Media	5 mL	RTU
Control Slide	1 slide (Optional)	FFPE
Datasheet	1 Copy	
Manual	1 Copy	

Storage Instructions

All the reagents are stored at 2-8°C. The kit is stable for 6 months from the date of receipt.

Background

DACT1 (Dapper/Frodo) is a member of the Dapper family, which includes three genes: DACT1, DACT2 and DACT3. As a tumor suppressor, DACT1 is downregulated in multiple tumor types, such as liver, colon and breast cancer. DACT1 is an important modulator of Wnt signaling, interacting with key components of the various Wnt transduction pathways. For instance, DACT1 binds to disheveled homolog 1 (Dvl1) to induce the degradation of Dvl1 and the subsequent inhibition of the Wnt/ β -catenin pathway.

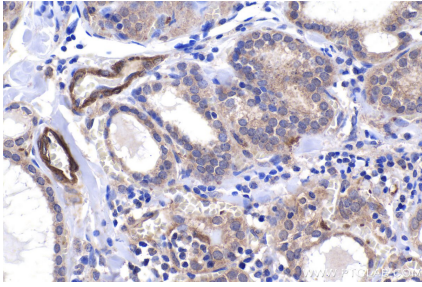
Synonyms

HNG3, HDPR1, FRODO, DPR1, DAPPER1

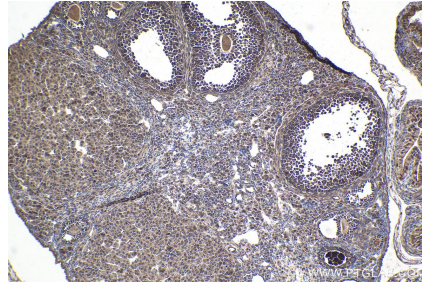
For technical support and original validation data for this product please contact:
T: 1 (888) 4PTGLAB (1-888-478-4522) (toll free in USA), or 1(312) 455-8498 (outside USA)
E: proteintech@ptglab.com
W: ptglab.com

This product is exclusively available under Proteintech Group brand and is not available to purchase from any other manufacturer.

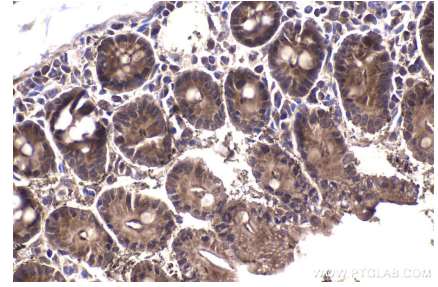
Selected Validation Data



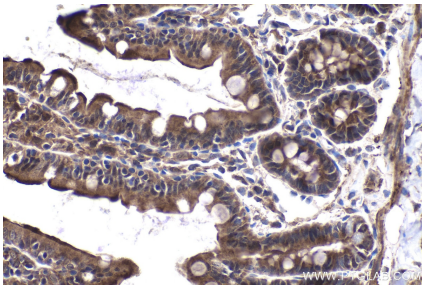
Immunohistochemical analysis of paraffin-embedded human thyroid cancer tissue slide using KHC1972 (DACT1 IHC Kit).



Immunohistochemical analysis of paraffin-embedded mouse ovary tissue slide using KHC1972 (DACT1 IHC Kit).



Immunohistochemical analysis of paraffin-embedded mouse intestine tissue slide using KHC1972 (DACT1 IHC Kit).



Immunohistochemical analysis of paraffin-embedded rat small intestine tissue slide using KHC1972 (DACT1 IHC Kit).