

IHC*easy* STK36 Ready-To-Use IHC Kit

Catalog Number: **KHC1962**

General Information

Sample type:
FFPE tissue
Cited sample type:
Reactivity:
Human, Mouse, Rat
Cited Reactivity:

Assay type:
Immunohistochemistry
Primary antibody type:
Rabbit Polyclonal
Secondary antibody type:
Polymer-HRP-Goat anti-Rabbit

Kit Component

Component	Size	Concentration
Antigen Retrieval Buffer	100 mL	50×
Washing Buffer	100 mL ×2	20×
Blocking Buffer	5 mL	RTU
Primary Antibody	5 mL	RTU
Secondary Antibody	5 mL	RTU
Chromogen Component A	0.2 mL	RTU
Chromogen Component B	4 mL	RTU
Signal Enhancer	5 mL	RTU
Counter Staining Reagent	5 mL	RTU
Mounting Media	5 mL	RTU
Control Slide	1 slide (Optional)	FFPE
Datasheet	1 Copy	
Manual	1 Copy	

Storage Instructions

All the reagents are stored at 2-8°C. The kit is stable for 6 months from the date of receipt.

Background

STK36(Serine/threonine-protein kinase 36) is also named as KIAA1278 and belongs to the Ser/Thr protein kinase family. The Serine/threonine protein kinase plays an important role in the sonic hedgehog (Shh) pathway by regulating the activity of GLI transcription factors and controls the activity of the transcriptional regulators GLI1, GLI2 and GLI3 by opposing the effect of SUFU and promoting their nuclear localization.

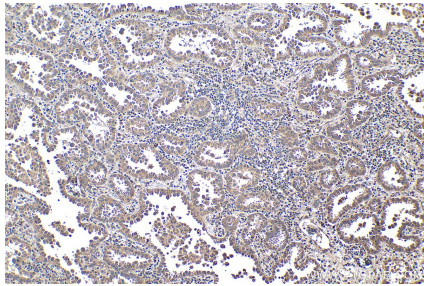
Synonyms

FU, Fused homolog, KIAA1278, STK36

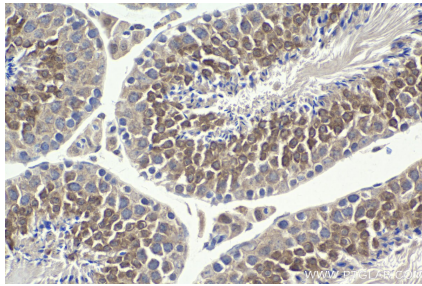
For technical support and original validation data for this product please contact:
T: 1 (888) 4PTGLAB (1-888-478-4522) (toll free in USA), or 1(312) 455-8498 (outside USA)
E: proteintech@ptglab.com
W: ptglab.com

This product is exclusively available under Proteintech Group brand and is not available to purchase from any other manufacturer.

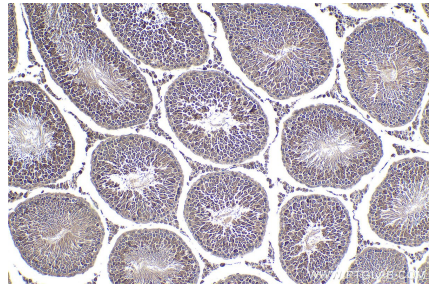
Selected Validation Data



Immunohistochemical analysis of paraffin-embedded human lung cancer tissue slide using KHC1962 (STK36 IHC Kit).



Immunohistochemical analysis of paraffin-embedded mouse testis tissue slide using KHC1962 (STK36 IHC Kit).



Immunohistochemical analysis of paraffin-embedded rat testis tissue slide using KHC1962 (STK36 IHC Kit).