

IHC*easy* SMURF2 Ready-To-Use IHC Kit

Catalog Number: **KHC1941**

General Information

Sample type:
FFPE tissue

Cited sample type:

Reactivity:
Human, Mouse, Rat

Cited Reactivity:

Assay type:
Immunohistochemistry

Primary antibody type:
Rabbit Polyclonal

Secondary antibody type:
Polymer-HRP-Goat anti-Rabbit

Kit Component

Component	Size	Concentration
Antigen Retrieval Buffer	100 mL	50×
Washing Buffer	100 mL ×2	20×
Blocking Buffer	5 mL	RTU
Primary Antibody	5 mL	RTU
Secondary Antibody	5 mL	RTU
Chromogen Component A	0.2 mL	RTU
Chromogen Component B	4 mL	RTU
Signal Enhancer	5 mL	RTU
Counter Staining Reagent	5 mL	RTU
Mounting Media	5 mL	RTU
Control Slide	1 slide (Optional)	FFPE
Datasheet	1 Copy	
Manual	1 Copy	

Storage Instructions

All the reagents are stored at 2-8°C. The kit is stable for 6 months from the date of receipt.

Background

SMURF2 is a HECT domain E3 ubiquitin ligase involved in degradation of SMADs, TGF-beta receptor, and other substrates. It also functions in regulation of neuronal and planar cell polarity, induction of senescence, and tumor suppression. SMURF2 associates constitutively with SMAD7 and is nuclear, but binding to SMAD7 induces export and recruitment to activated TGFBR, where it causes degradation of receptors and of SMAD7 via proteasomal and lysosomal pathways.

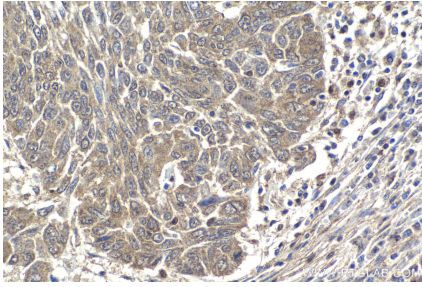
Synonyms

hSMURF2, SMURF2

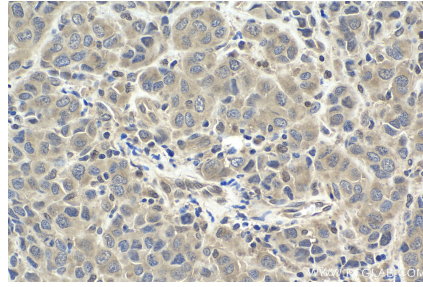
For technical support and original validation data for this product please contact:
T: 1 (888) 4PTGLAB (1-888-478-4522) (toll free in USA), or 1(312) 455-8498 (outside USA)
E: proteintech@ptglab.com
W: ptglab.com

This product is exclusively available under Proteintech Group brand and is not available to purchase from any other manufacturer.

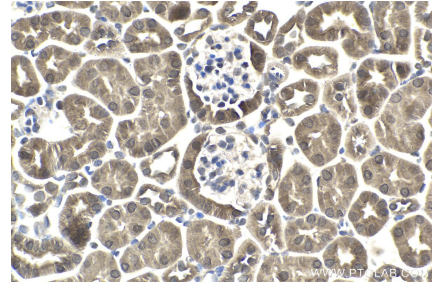
Selected Validation Data



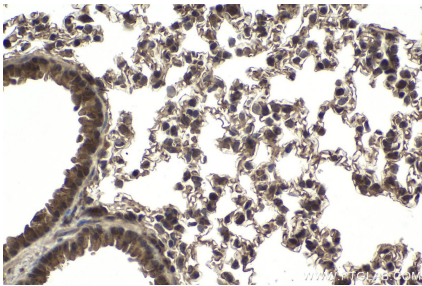
Immunohistochemical analysis of paraffin-embedded human lung cancer tissue slide using KHC1941 (SMURF2 IHC Kit).



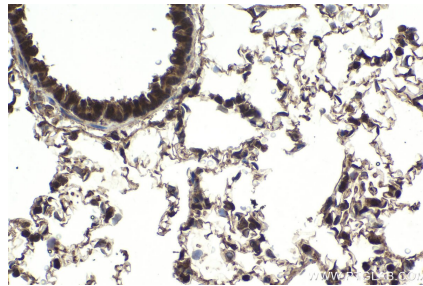
Immunohistochemical analysis of paraffin-embedded human malignant melanoma tissue slide using KHC1941 (SMURF2 IHC Kit).



Immunohistochemical analysis of paraffin-embedded mouse kidney tissue slide using KHC1941 (SMURF2 IHC Kit).



Immunohistochemical analysis of paraffin-embedded mouse lung tissue slide using KHC1941 (SMURF2 IHC Kit).



Immunohistochemical analysis of paraffin-embedded rat lung tissue slide using KHC1941 (SMURF2 IHC Kit).



Immunohistochemical analysis of paraffin-embedded rat testis tissue slide using KHC1941 (SMURF2 IHC Kit).