

IHC*easy* TASL/CXorf21 Ready-To-Use IHC Kit

Catalog Number: **KHC1939**

General Information

Sample type:
FFPE tissue

Cited sample type:

Reactivity:
Human, Mouse, Rat

Cited Reactivity:

Assay type:
Immunohistochemistry

Primary antibody type:
Rabbit Polyclonal

Secondary antibody type:
Polymer-HRP-Goat anti-Rabbit

Kit Component

Component	Size	Concentration
Antigen Retrieval Buffer	100 mL	50×
Washing Buffer	100 mL ×2	20×
Blocking Buffer	5 mL	RTU
Primary Antibody	5 mL	RTU
Secondary Antibody	5 mL	RTU
Chromogen Component A	0.2 mL	RTU
Chromogen Component B	4 mL	RTU
Signal Enhancer	5 mL	RTU
Counter Staining Reagent	5 mL	RTU
Mounting Media	5 mL	RTU
Control Slide	1 slide (Optional)	FFPE
Datasheet	1 Copy	
Manual	1 Copy	

Storage Instructions

All the reagents are stored at 2-8°C. The kit is stable for 6 months from the date of receipt.

Background

CXorf21 (Chromosome X open reading frame 21) is also named as TASL and TLR adapter interacting with SLC15A4 on the lysosome. CXorf21 is an innate immune adapter that mediates the recruitment and activation of IRF5 downstream of endolysosomal toll-like receptors TLR7, TLR8 and TLR9. CXorf21 plays a role in the regulation of endolysosomal pH in immune cells such as B-cells, dendritic cells and monocytes. CXorf21 is a mediator of the X-chromosome gene dose-dependent increased risk of SLE in females.

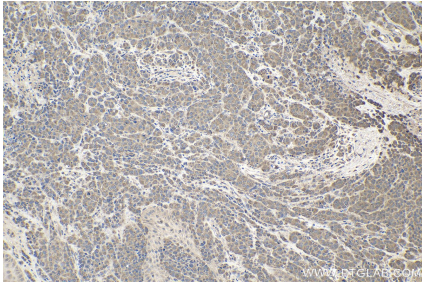
Synonyms

CXorf21, FLJ11577

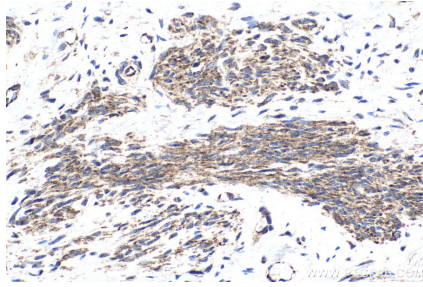
For technical support and original validation data for this product please contact:
T: 1 (888) 4PTGLAB (1-888-478-4522) (toll free in USA), or 1(312) 455-8498 (outside USA)
E: proteintech@ptglab.com
W: ptglab.com

This product is exclusively available under Proteintech Group brand and is not available to purchase from any other manufacturer.

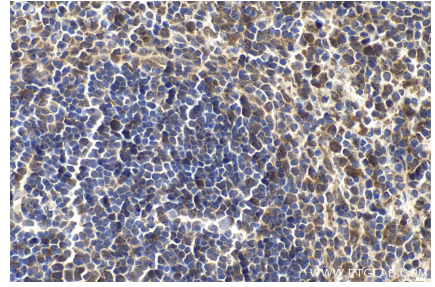
Selected Validation Data



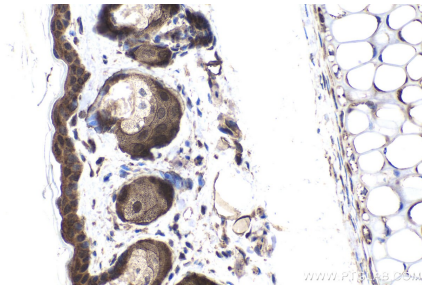
Immunohistochemical analysis of paraffin-embedded human malignant melanoma tissue slide using KHC1939 (TASL/CXorf21 IHC Kit).



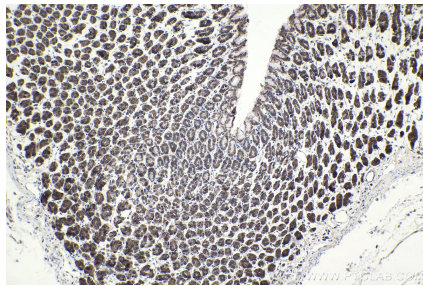
Immunohistochemical analysis of paraffin-embedded human cervical cancer tissue slide using KHC1939 (TASL/CXorf21 IHC Kit).



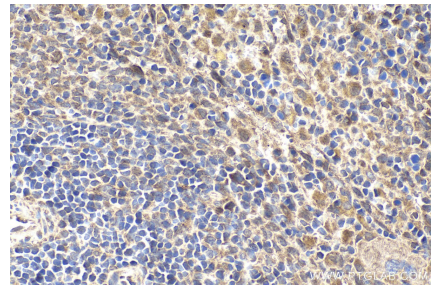
Immunohistochemical analysis of paraffin-embedded mouse spleen tissue slide using KHC1939 (TASL/CXorf21 IHC Kit).



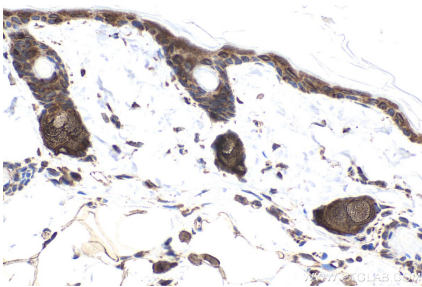
Immunohistochemical analysis of paraffin-embedded mouse skin tissue slide using KHC1939 (TASL/CXorf21 IHC Kit).



Immunohistochemical analysis of paraffin-embedded rat stomach tissue slide using KHC1939 (TASL/CXorf21 IHC Kit).



Immunohistochemical analysis of paraffin-embedded rat spleen tissue slide using KHC1939 (TASL/CXorf21 IHC Kit).



Immunohistochemical analysis of paraffin-embedded rat skin tissue slide using KHC1939 (TASL/CXorf21 IHC Kit).