

IHC*easy* RPL7A Ready-To-Use IHC Kit

Catalog Number: **KHC1265**

General Information

Sample type:
FFPE tissue

Cited sample type:

Reactivity:
Human, Mouse, Rat

Cited Reactivity:

Assay type:
Immunohistochemistry

Primary antibody type:
Rabbit Polyclonal

Secondary antibody type:
Polymer-HRP-Goat anti-Rabbit

Kit Component

Component	Size	Concentration
Antigen Retrieval Buffer	100 mL	50×
Washing Buffer	100 mL ×2	20×
Blocking Buffer	5 mL	RTU
Primary Antibody	5 mL	RTU
Secondary Antibody	5 mL	RTU
Chromogen Component A	0.2 mL	RTU
Chromogen Component B	4 mL	RTU
Signal Enhancer	5 mL	RTU
Counter Staining Reagent	5 mL	RTU
Mounting Media	5 mL	RTU
Control Slide	1 slide (Optional)	FFPE
Datasheet	1 Copy	
Manual	1 Copy	

Storage Instructions

All the reagents are stored at 2-8°C. The kit is stable for 6 months from the date of receipt.

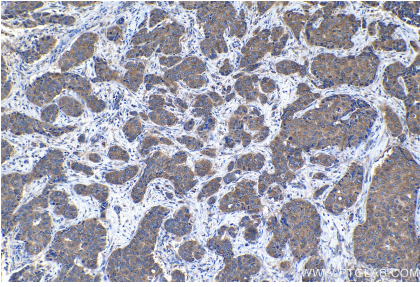
Background

Ribosomal proteins are a major component of ribosomes, which catalyze protein synthesis. RPL7a, which is a component of the 60S large ribosomal subunit, has additional functions involved in cell growth and differentiation that occur via interaction with human thyroid hormone receptor (THR) and retinoic acid receptor (RAR) and in turn inhibit the activities of the two nuclear hormone receptors.

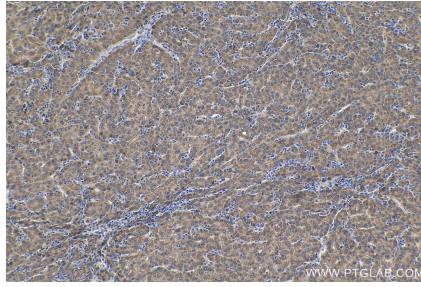
Synonyms

60S ribosomal protein L7a, PLA X polypeptide, ribosomal protein L7a, RPL7A, SURF 3, SURF3, Surfeit locus protein 3, TRUP

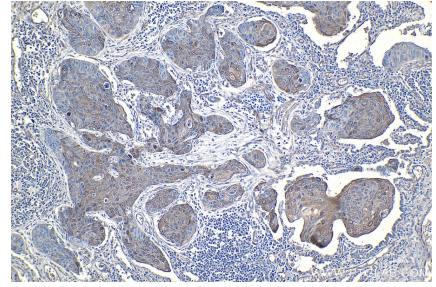
Selected Validation Data



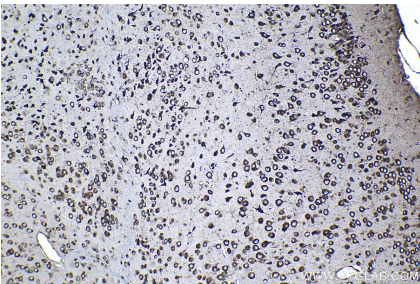
Immunohistochemical analysis of paraffin-embedded human breast cancer tissue slide using KHC1265 (RPL7A IHC Kit).



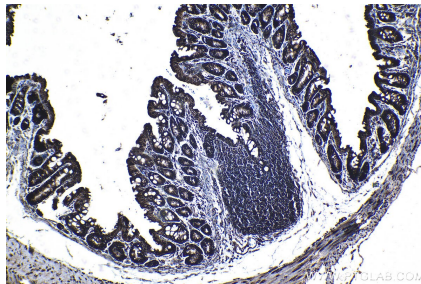
Immunohistochemical analysis of paraffin-embedded human liver cancer tissue slide using KHC1265 (RPL7A IHC Kit).



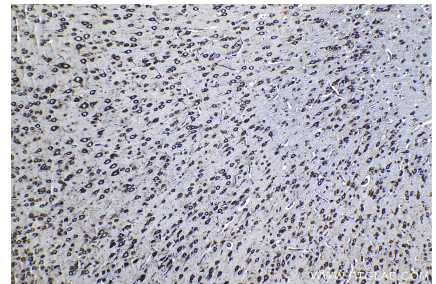
Immunohistochemical analysis of paraffin-embedded human lung cancer tissue slide using KHC1265 (RPL7A IHC Kit).



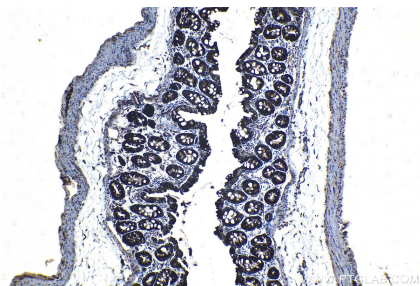
Immunohistochemical analysis of paraffin-embedded mouse brain tissue slide using KHC1265 (RPL7A IHC Kit).



Immunohistochemical analysis of paraffin-embedded mouse colon tissue slide using KHC1265 (RPL7A IHC Kit).



Immunohistochemical analysis of paraffin-embedded rat brain tissue slide using KHC1265 (RPL7A IHC Kit).



Immunohistochemical analysis of paraffin-embedded rat colon tissue slide using KHC1265 (RPL7A IHC Kit).