

IHC*easy* FERMT1/Kindlin 1 Ready-To-Use IHC Kit

Catalog Number: **KHC0775**

General Information

Sample type:
FFPE tissue
Cited sample type:
Reactivity:
Human
Cited Reactivity:

Assay type:
Immunohistochemistry
Primary antibody type:
Rabbit Polyclonal
Secondary antibody type:
Polymer-HRP-Goat anti-Rabbit

Kit Component

Component	Size	Concentration
Antigen Retrieval Buffer	100 mL	50×
Washing Buffer	100 mL ×2	20×
Blocking Buffer	5 mL	RTU
Primary Antibody	5 mL	RTU
Secondary Antibody	5 mL	RTU
Chromogen Component A	0.2 mL	RTU
Chromogen Component B	4 mL	RTU
Signal Enhancer	5 mL	RTU
Counter Staining Reagent	5 mL	RTU
Mounting Media	5 mL	RTU
Control Slide	1 slide (Optional)	FFPE
Datasheet	1 Copy	
Manual	1 Copy	

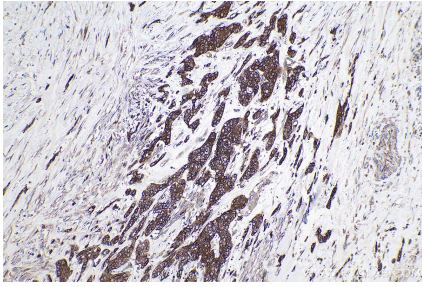
Storage Instructions

All the reagents are stored at 2-8°C. The kit is stable for 6 months from the date of receipt.

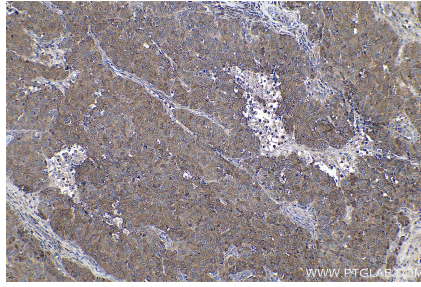
Synonyms

C20orf42, DTGCU2, Fermitin family homolog 1, FERMT1, KIND1, Kindlerin, Kindlin 1, Kindlin syndrome protein, Unc 112 related protein 1, UNC112A, URP1

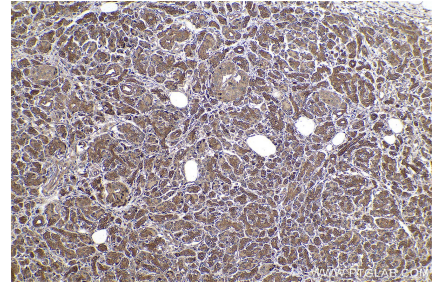
Selected Validation Data



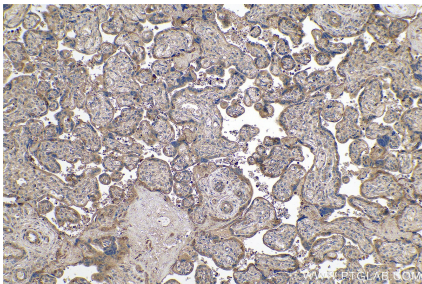
Immunohistochemical analysis of paraffin-embedded human urothelial carcinoma tissue slide using KHC0775 (FERMT1/Kindlin 1 IHC Kit).



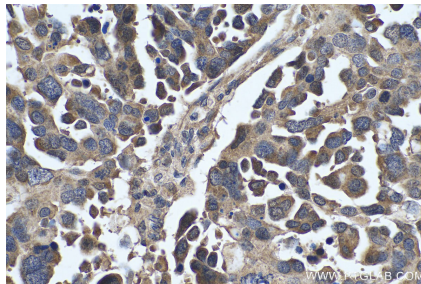
Immunohistochemical analysis of paraffin-embedded human stomach cancer tissue slide using KHC0775 (FERMT1/Kindlin 1 IHC Kit).



Immunohistochemical analysis of paraffin-embedded human pancreas cancer tissue slide using KHC0775 (FERMT1/Kindlin 1 IHC Kit).



Immunohistochemical analysis of paraffin-embedded human placenta tissue slide using KHC0775 (FERMT1/Kindlin 1 IHC Kit).



Immunohistochemical analysis of paraffin-embedded human colon cancer tissue slide using KHC0775 (FERMT1/Kindlin 1 IHC Kit).