

# IHC*easy* KRT17 Ready-To-Use IHC Kit

Catalog Number: **KHC0753**

## General Information

**Sample type:**  
FFPE tissue

**Cited sample type:**

**Reactivity:**  
Human, Mouse, Rat

**Cited Reactivity:**

**Assay type:**  
Immunohistochemistry

**Primary antibody type:**  
Rabbit Polyclonal

**Secondary antibody type:**  
Polymer-HRP-Goat anti-Rabbit

## Kit Component

Component	Size	Concentration
Antigen Retrieval Buffer	100 mL	50×
Washing Buffer	100 mL ×2	20×
Blocking Buffer	5 mL	RTU
Primary Antibody	5 mL	RTU
Secondary Antibody	5 mL	RTU
Chromogen Component A	0.2 mL	RTU
Chromogen Component B	4 mL	RTU
Signal Enhancer	5 mL	RTU
Counter Staining Reagent	5 mL	RTU
Mounting Media	5 mL	RTU
Control Slide	1 slide (Optional)	FFPE
Datasheet	1 Copy	
Manual	1 Copy	

## Storage Instructions

All the reagents are stored at 2-8°C. The kit is stable for 6 months from the date of receipt.

## Background

Keratins are a large family of proteins that form the intermediate filaments that make up the cytoskeleton. Type I keratins are a group of acidic intermediate filament proteins and type II keratins are the basic or neutral counterparts. Keratin 17 is encoded by the KRT17 gene and is a type I cytokeratin found in nail beds, hair follicles, sebaceous glands, and epidermal appendages. Cytokeratin 17 plays a role in the formation and maintenance of epidermal appendages, especially in determining the shape and orientation of hair. It is required for the maintenance of the anagen (growth) state of hair follicles by modulating the function of TNF-alpha for hair cycling and is also involved in tissue repair.

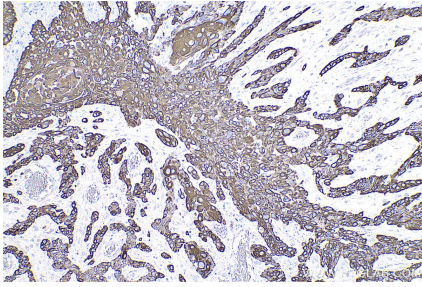
## Synonyms

39.1, Cell and organelle markers, CK 17, Cytokeratin 17, Cytokeratin 17-Specific, Cytoskeleton Marker, K17, keratin 17, KRT17, PCHC1

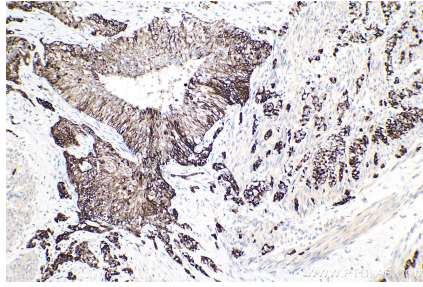
For technical support and original validation data for this product please contact:  
T: 1 (888) 4PTGLAB (1-888-478-4522) (toll free in USA), or 1(312) 455-8498 (outside USA)  
E: [proteintech@ptglab.com](mailto:proteintech@ptglab.com)  
W: [ptglab.com](http://ptglab.com)

This product is exclusively available under Proteintech Group brand and is not available to purchase from any other manufacturer.

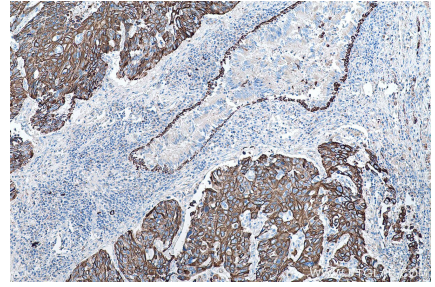
## Selected Validation Data



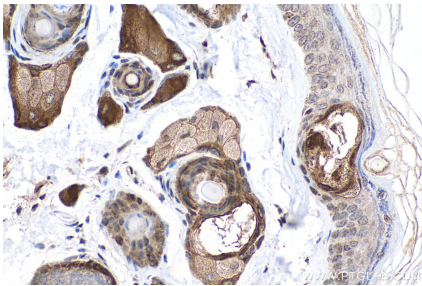
Immunohistochemical analysis of paraffin-embedded human oesophagus cancer tissue slide using KHC0753 (KRT17 IHC Kit).



Immunohistochemical analysis of paraffin-embedded human urothelial carcinoma tissue slide using KHC0753 (KRT17 IHC Kit).



Immunohistochemical analysis of paraffin-embedded human lung cancer tissue slide using KHC0753 (KRT17 IHC Kit).



Immunohistochemical analysis of paraffin-embedded mouse skin tissue slide using KHC0753 (KRT17 IHC Kit).