

IHC*easy* ELANE/ELA2 Ready-To-Use IHC Kit

Catalog Number: **KHC0695**

General Information

Sample type:
FFPE tissue
Cited sample type:
Reactivity:
Human
Cited Reactivity:

Assay type:
Immunohistochemistry
Primary antibody type:
Rabbit Polyclonal
Secondary antibody type:
Polymer-HRP-Goat anti-Rabbit

Kit Component

Component	Size	Concentration
Antigen Retrieval Buffer	100 mL	50×
Washing Buffer	100 mL ×2	20×
Blocking Buffer	5 mL	RTU
Primary Antibody	5 mL	RTU
Secondary Antibody	5 mL	RTU
Chromogen Component A	0.2 mL	RTU
Chromogen Component B	4 mL	RTU
Signal Enhancer	5 mL	RTU
Counter Staining Reagent	5 mL	RTU
Mounting Media	5 mL	RTU
Control Slide	1 slide (Optional)	FFPE
Datasheet	1 Copy	
Manual	1 Copy	

Storage Instructions

All the reagents are stored at 2-8°C. The kit is stable for 6 months from the date of receipt.

Background

ELA2 (Neutrophil elastase) is also named as ELAL, NE, HLE, HNE, PMN-E, SERP1, GE, ELANE and belongs to the peptidase S1 family. It is an enzyme with several isoforms that differ in their extent of glycosylation. Human neutrophil elastase (HNE) is a serine protease with potent proteolytic activity, which is reported to cause mucin secretion (degranulation). It may contribute to the directed migration of leukocytes into flamed postcapillary venules in addition to contributing to the process of tissue emigration.

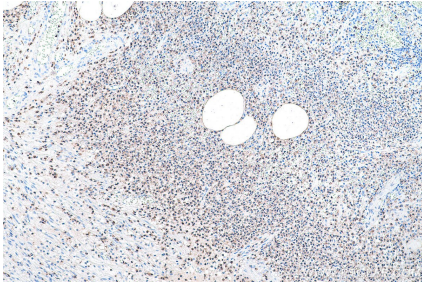
Synonyms

Bone marrow serine protease, ELA2, ELANE, Elastase 2, elastase 2, neutrophil, GE, HLE, HNE, Human leukocyte elastase, Medullasin, NE, Neutrophil elastase, PMN E, PMN elastase

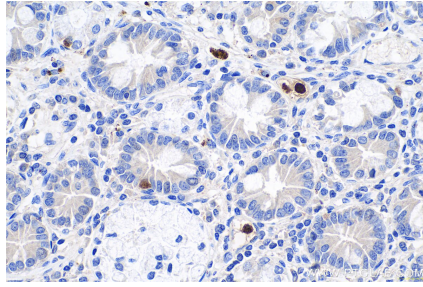
For technical support and original validation data for this product please contact:
T: 1 (888) 4PTGLAB (1-888-478-4522) (toll free in USA), or 1(312) 455-8498 (outside USA)
E: proteintech@ptglab.com
W: ptglab.com

This product is exclusively available under Proteintech Group brand and is not available to purchase from any other manufacturer.

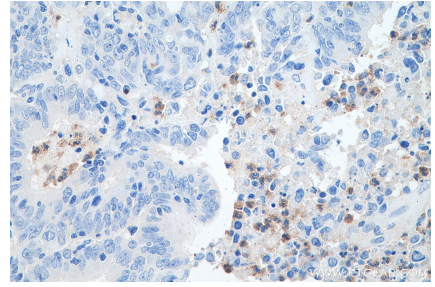
Selected Validation Data



Immunohistochemical analysis of paraffin-embedded human appendicitis tissue slide using KHC0695 (ELANE/ELA2 IHC Kit).



Immunohistochemical analysis of paraffin-embedded human stomach cancer tissue slide using KHC0695 (ELANE/ELA2 IHC Kit).



Immunohistochemical analysis of paraffin-embedded human colon cancer tissue slide using KHC0695 (ELANE/ELA2 IHC Kit).