

# IHC*easy* UBA1 Ready-To-Use IHC Kit

Catalog Number: **KHC0679**

## General Information

**Sample type:**  
FFPE tissue

**Cited sample type:**

**Reactivity:**  
Human, Mouse, Rat

**Cited Reactivity:**

**Assay type:**  
Immunohistochemistry

**Primary antibody type:**  
Mouse Monoclonal

**Secondary antibody type:**  
Polymer-HRP-Goat anti-Mouse

## Kit Component

| Component                | Size               | Concentration |
|--------------------------|--------------------|---------------|
| Antigen Retrieval Buffer | 100 mL             | 50×           |
| Washing Buffer           | 100 mL ×2          | 20×           |
| Blocking Buffer          | 5 mL               | RTU           |
| Primary Antibody         | 5 mL               | RTU           |
| Secondary Antibody       | 5 mL               | RTU           |
| Chromogen Component A    | 0.2 mL             | RTU           |
| Chromogen Component B    | 4 mL               | RTU           |
| Signal Enhancer          | 5 mL               | RTU           |
| Counter Staining Reagent | 5 mL               | RTU           |
| Mounting Media           | 5 mL               | RTU           |
| Control Slide            | 1 slide (Optional) | FFPE          |
| Datasheet                | 1 Copy             |               |
| Manual                   | 1 Copy             |               |

## Storage Instructions

All the reagents are stored at 2-8°C. The kit is stable for 6 months from the date of receipt.

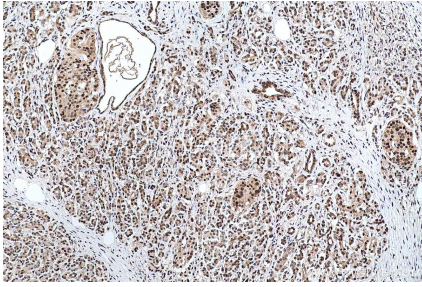
## Background

UBE1(Ubiquitin-activating enzyme E1) is also named as A1S9T, UBE1 and belongs to the ubiquitin-activating E1 family. It catalyzes the first step in ubiquitin conjugation to mark cellular proteins for degradation and initiates the activation and conjugation of ubiquitin-like proteins. Defects in UBE1 are the cause of spinal muscular atrophy X-linked type 2 (SMA<sub>X2</sub>).

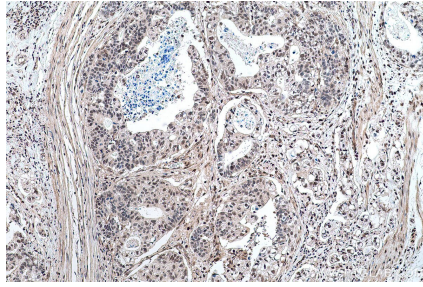
## Synonyms

A1S9, A1S9T, A1ST, AMCX1, GXP1, Protein A1S9, SMA<sub>X2</sub>, UBA1, UBA1A, UBE1, UBE1X, Ubiquitin activating enzyme E1

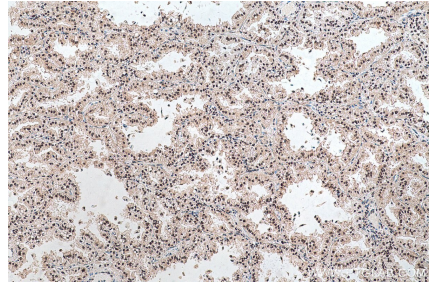
## Selected Validation Data



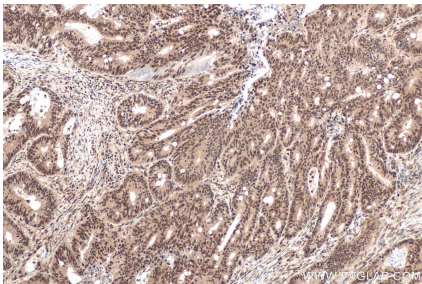
Immunohistochemical analysis of paraffin-embedded human pancreas cancer tissue slide using KHC0679 (UBA1 IHC Kit).



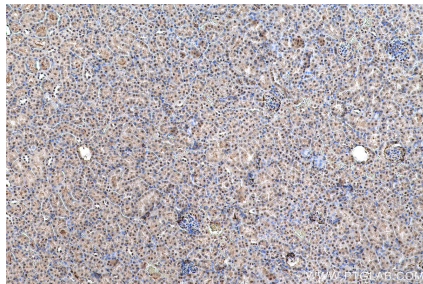
Immunohistochemical analysis of paraffin-embedded human stomach cancer tissue slide using KHC0679 (UBA1 IHC Kit).



Immunohistochemical analysis of paraffin-embedded human lung cancer tissue slide using KHC0679 (UBA1 IHC Kit).



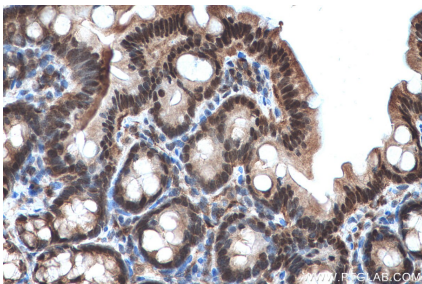
Immunohistochemical analysis of paraffin-embedded human colon cancer tissue slide using KHC0679 (UBA1 IHC Kit).



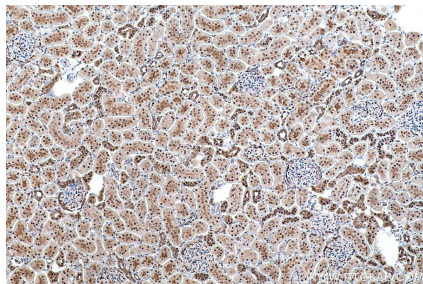
Immunohistochemical analysis of paraffin-embedded mouse kidney tissue slide using KHC0679 (UBA1 IHC Kit).



Immunohistochemical analysis of paraffin-embedded mouse colon tissue slide using KHC0679 (UBA1 IHC Kit).



Immunohistochemical analysis of paraffin-embedded rat colon tissue slide using KHC0679 (UBA1 IHC Kit).



Immunohistochemical analysis of paraffin-embedded rat kidney tissue slide using KHC0679 (UBA1 IHC Kit).