

# IHC*easy* MSN Ready-To-Use IHC Kit

Catalog Number: **KHC0664**

## General Information

**Sample type:**  
FFPE tissue

**Cited sample type:**

**Reactivity:**  
Human, Mouse, Rat

**Cited Reactivity:**

**Assay type:**  
Immunohistochemistry

**Primary antibody type:**  
Rabbit Polyclonal

**Secondary antibody type:**  
Polymer-HRP-Goat anti-Rabbit

## Kit Component

Component	Size	Concentration
Antigen Retrieval Buffer	100 mL	50×
Washing Buffer	100 mL ×2	20×
Blocking Buffer	5 mL	RTU
Primary Antibody	5 mL	RTU
Secondary Antibody	5 mL	RTU
Chromogen Component A	0.2 mL	RTU
Chromogen Component B	4 mL	RTU
Signal Enhancer	5 mL	RTU
Counter Staining Reagent	5 mL	RTU
Mounting Media	5 mL	RTU
Control Slide	1 slide (Optional)	FFPE
Datasheet	1 Copy	
Manual	1 Copy	

## Storage Instructions

All the reagents are stored at 2-8°C. The kit is stable for 6 months from the date of receipt.

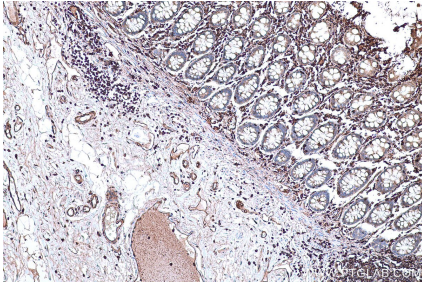
## Background

ubstrate adhesion, cell survival, cell adhesion, and motility. The function of ERM proteins is highly reliant on phosphorylation induced conformational changes in response to growth factor, chemokine, and antigen stimulation. Primary antibody in this kit may cross-react with ezrin or radixin.

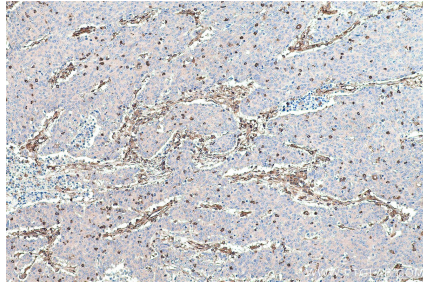
## Synonyms

moesin, MSN

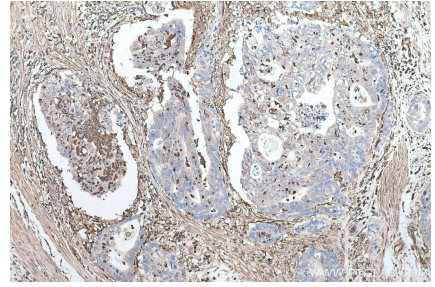
## Selected Validation Data



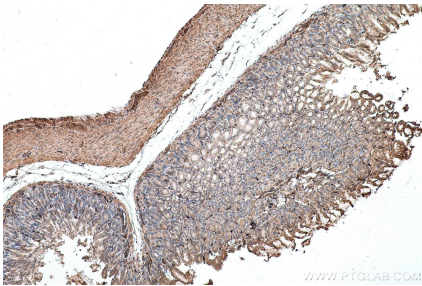
Immunohistochemical analysis of paraffin-embedded human colon tissue slide using KHC0664 (MSN IHC Kit).



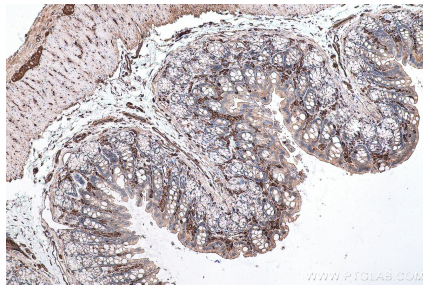
Immunohistochemical analysis of paraffin-embedded human colon cancer tissue slide using KHC0664 (MSN IHC Kit).



Immunohistochemical analysis of paraffin-embedded human stomach cancer tissue slide using KHC0664 (MSN IHC Kit).



Immunohistochemical analysis of paraffin-embedded mouse stomach tissue slide using KHC0664 (MSN IHC Kit).



Immunohistochemical analysis of paraffin-embedded rat colon tissue slide using KHC0664 (MSN IHC Kit).