

# IHC*easy* TUBA1B Ready-To-Use IHC Kit

Catalog Number: **KHC0468**

## General Information

**Sample type:**  
FFPE tissue

**Cited sample type:**

**Reactivity:**  
Human, Mouse, Rat

**Cited Reactivity:**

**Assay type:**  
Immunohistochemistry

**Primary antibody type:**  
Mouse Monoclonal

**Secondary antibody type:**  
Polymer-HRP-Goat anti-Mouse

## Kit Component

Component	Size	Concentration
Antigen Retrieval Buffer	100 mL	50×
Washing Buffer	100 mL ×2	20×
Blocking Buffer	5 mL	RTU
Primary Antibody	5 mL	RTU
Secondary Antibody	5 mL	RTU
Chromogen Component A	0.2 mL	RTU
Chromogen Component B	4 mL	RTU
Signal Enhancer	5 mL	RTU
Counter Staining Reagent	5 mL	RTU
Mounting Media	5 mL	RTU
Control Slide	1 slide (Optional)	FFPE
Datasheet	1 Copy	
Manual	1 Copy	

## Storage Instructions

All the reagents are stored at 2-8°C. The kit is stable for 6 months from the date of receipt.

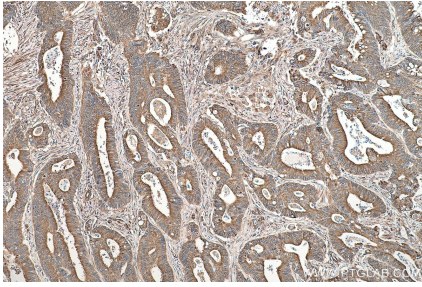
## Background

There are five tubulins in human cells: alpha, beta, gamma, delta, and epsilon. Tubulins are conserved across species. They form heterodimers, which multimerize to form a microtubule filament. An alpha and beta tubulin heterodimer is the basic structural unit of microtubules. The heterodimer does not come apart once formed. The alpha and beta tubulins are homologous but not identical. Alpha tubulin is useful for scientists across fields as an internal control due to its high, ubiquitous expression pattern. Tubulin expression may vary according to resistance to antimicrobial and antimitotic drugs. Primary antibody in this kit specifically recognizes Tubulin Alpha.

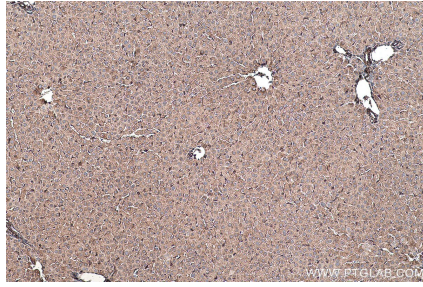
## Synonyms

alpha Tubulin, Alpha tubulin ubiquitous, K ALPHA 1, TUBA1B, tubulin, Tubulin alpha, Tubulin alpha 1B chain, Tubulin alpha ubiquitous chain, Tubulin K alpha 1, tubulin, alpha 1b, α-tubulin

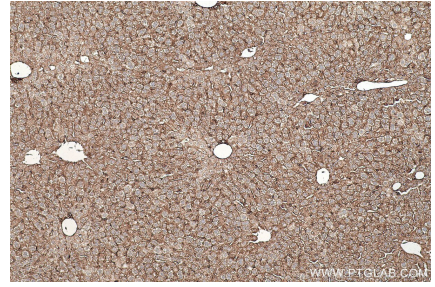
## Selected Validation Data



Immunohistochemical analysis of paraffin-embedded human colon cancer tissue slide using KHCO468 (Alpha Tubulin IHC Kit).



Immunohistochemical analysis of paraffin-embedded rat liver tissue slide using KHCO468 (Alpha Tubulin IHC Kit).



Immunohistochemical analysis of paraffin-embedded mouse liver tissue slide using KHCO468 (Alpha Tubulin IHC Kit).