

# IHC*easy* RAB27A Ready-To-Use IHC Kit

Catalog Number: **KHC0450**

## General Information

Sample type:  
FFPE tissue

Cited sample type:

Reactivity:  
Human

Cited Reactivity:

Assay type:  
Immunohistochemistry

Primary antibody type:  
Mouse Monoclonal

Secondary antibody type:  
Polymer-HRP-Goat anti-Mouse

## Kit Component

Component	Size	Concentration
Antigen Retrieval Buffer	100 mL	50×
Washing Buffer	100 mL ×2	20×
Blocking Buffer	5 mL	RTU
Primary Antibody	5 mL	RTU
Secondary Antibody	5 mL	RTU
Chromogen Component A	0.2 mL	RTU
Chromogen Component B	4 mL	RTU
Signal Enhancer	5 mL	RTU
Counter Staining Reagent	5 mL	RTU
Mounting Media	5 mL	RTU
Control Slide	1 slide (Optional)	FFPE
Datasheet	1 Copy	
Manual	1 Copy	

## Storage Instructions

All the reagents are stored at 2-8°C. The kit is stable for 6 months from the date of receipt.

## Background

Rab27A is a member of a large family of Ras-related small GTPases. The protein is membrane-bound and may be involved in protein transport and small GTPase mediated signal transduction. Recent studies suggest that Rab27A is associated with melanosomes in pigmented cells and regulates melanosome transport via its interaction with actin-based cellular motors such as myosin Va and myosin VIIa. RAB27A is also required for regulated secretion in cytotoxic T lymphocytes. Rab27A is implicated in several diseases, including Griscelli syndrome, choroïderemia, and the Hermansky-Pudlak syndrome mouse model, *gunmetal*.

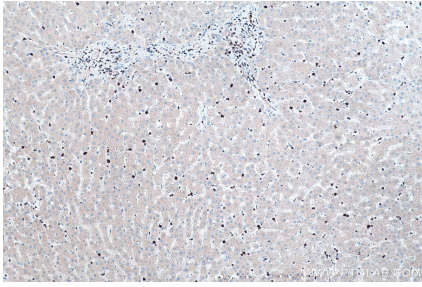
## Synonyms

GS2, GTP binding protein Ram, HsT18676, Rab 27, RAB27, RAB27A, RAM, Ras related protein Rab 27A

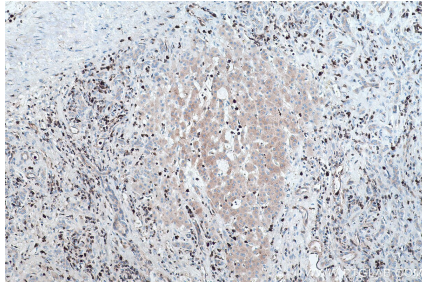
For technical support and original validation data for this product please contact:  
T: 1 (888) 4PTGLAB (1-888-478-4522) (toll free in USA), or 1(312) 455-8498 (outside USA)  
E: [proteintech@ptglab.com](mailto:proteintech@ptglab.com)  
W: [ptglab.com](http://ptglab.com)

This product is exclusively available under Proteintech Group brand and is not available to purchase from any other manufacturer.

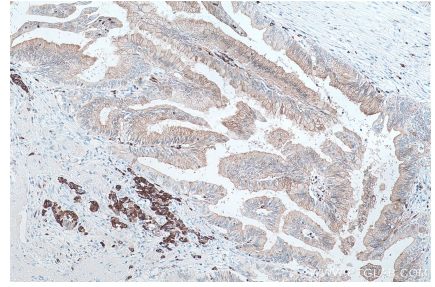
## Selected Validation Data



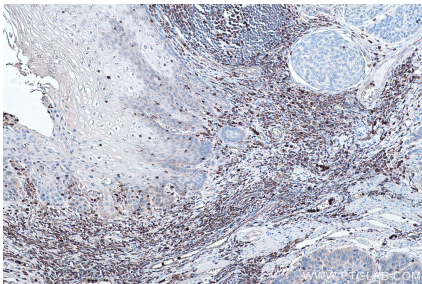
Immunohistochemical analysis of paraffin-embedded human liver tissue slide using KHC0450 (RAB27A IHC Kit).



Immunohistochemical analysis of paraffin-embedded human liver cancer tissue slide using KHC0450 (RAB27A IHC Kit).



Immunohistochemical analysis of paraffin-embedded human pancreas cancer tissue slide using KHC0450 (RAB27A IHC Kit).



Immunohistochemical analysis of paraffin-embedded human oesophagus cancer tissue slide using KHC0450 (RAB27A IHC Kit).