

IHC*easy* CASP7 Ready-To-Use IHC Kit

Catalog Number: **KHC0406**

General Information

Sample type:
FFPE tissue

Cited sample type:

Reactivity:
Human, Mouse, Rat

Cited Reactivity:

Assay type:
Immunohistochemistry

Primary antibody type:
Mouse Monoclonal

Secondary antibody type:
Polymer-HRP-Goat anti-Mouse

Kit Component

Component	Size	Concentration
Antigen Retrieval Buffer	100 mL	50×
Washing Buffer	100 mL ×2	20×
Blocking Buffer	5 mL	RTU
Primary Antibody	5 mL	RTU
Secondary Antibody	5 mL	RTU
Chromogen Component A	0.2 mL	RTU
Chromogen Component B	4 mL	RTU
Signal Enhancer	5 mL	RTU
Counter Staining Reagent	5 mL	RTU
Mounting Media	5 mL	RTU
Control Slide	1 slide (Optional)	FFPE
Datasheet	1 Copy	
Manual	1 Copy	

Storage Instructions

All the reagents are stored at 2-8°C. The kit is stable for 6 months from the date of receipt.

Background

Caspase 7(CASP7), like caspases 3 and 6, contains a short prodomain and, upon apoptotic induction, proform is converted into a intermediate or preactive form which is further processed into two active subunits consisting of the p20 or large subunit and the p10 or small subunit and it is present in the brain, which is up-regulated and activated after traumatic injury. Caspase-7 is classified as a member of the subgroup of cysteine proteases most related to the *Caenorhabditis elegans* factor CED-3, which also includes caspase-3, -6, and -9. The protein is involved in the activation cascade of caspases responsible for apoptosis execution.

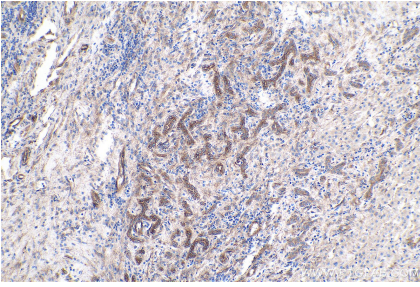
Synonyms

Apoptotic protease Mch 3, CASP 7, CASP7, Caspase 7, Caspase7, CMH 1, ICE LAP3, ICE like apoptotic protease 3, MCH3

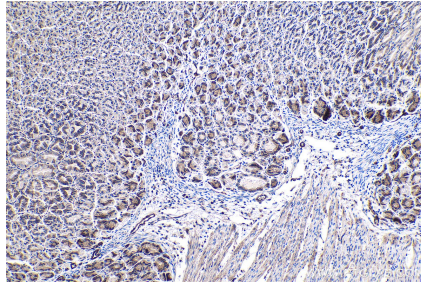
For technical support and original validation data for this product please contact:
T: 1 (888) 4PTGLAB (1-888-478-4522) (toll free in USA), or 1(312) 455-8498 (outside USA)
E: proteintech@ptglab.com
W: ptglab.com

This product is exclusively available under Proteintech Group brand and is not available to purchase from any other manufacturer.

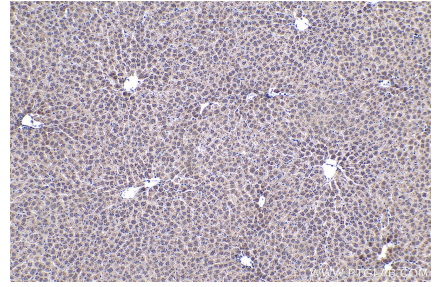
Selected Validation Data



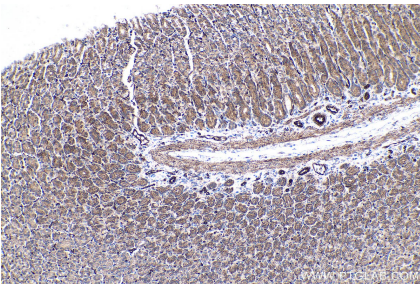
Immunohistochemical analysis of paraffin-embedded human liver cancer tissue slide using KHC0406 (CASP7 IHC Kit).



Immunohistochemical analysis of paraffin-embedded mouse stomach tissue slide using KHC0406 (CASP7 IHC Kit).



Immunohistochemical analysis of paraffin-embedded rat liver tissue slide using KHC0406 (CASP7 IHC Kit).



Immunohistochemical analysis of paraffin-embedded rat stomach tissue slide using KHC0406 (CASP7 IHC Kit).