

# IHC*easy* FGB Ready-To-Use IHC Kit

Catalog Number: **KHC0388**

## General Information

**Sample type:**  
FFPE tissue

**Cited sample type:**

**Reactivity:**  
Human, Mouse, Rat

**Cited Reactivity:**

**Assay type:**  
Immunohistochemistry

**Primary antibody type:**  
Rabbit Polyclonal

**Secondary antibody type:**  
Polymer-HRP-Goat anti-Rabbit

## Kit Component

Component	Size	Concentration
Antigen Retrieval Buffer	100 mL	50×
Washing Buffer	100 mL ×2	20×
Blocking Buffer	5 mL	RTU
Primary Antibody	5 mL	RTU
Secondary Antibody	5 mL	RTU
Chromogen Component A	0.2 mL	RTU
Chromogen Component B	4 mL	RTU
Signal Enhancer	5 mL	RTU
Counter Staining Reagent	5 mL	RTU
Mounting Media	5 mL	RTU
Control Slide	1 slide (Optional)	FFPE
Datasheet	1 Copy	
Manual	1 Copy	

## Storage Instructions

All the reagents are stored at 2-8°C. The kit is stable for 6 months from the date of receipt.

## Background

Fibrinogen is a soluble plasma glycoprotein synthesized in the liver. It is composed of two sets of three structurally different subunits: alpha (FGA), beta (FGB), gamma (FGG). Fibrinogen is converted by thrombin into fibrin during blood coagulation. Fibrinogen and fibrin play overlapping roles in blood clotting, fibrinolysis, cellular and matrix interactions, the inflammatory response, wound healing, and neoplasia. FGB is the beta chain of fibrinogen. During conversion of fibrinogen to fibrin, fibrinopeptide B is cleaved from FGB by thrombin. Mutations in the gene of FGB lead to several disorders, including afibrinogenemia, dysfibrinogenemia, hypodysfibrinogenemia and thrombotic tendency.

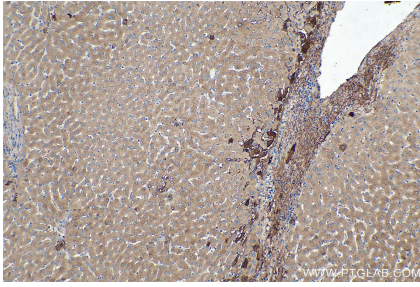
## Synonyms

FGB, fibrinogen beta chain

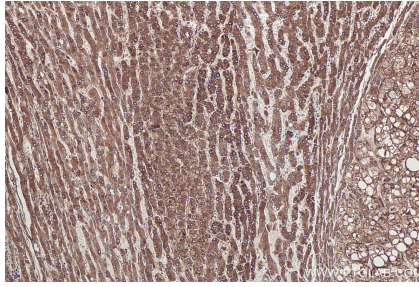
For technical support and original validation data for this product please contact:  
T: 1 (888) 4PTGLAB (1-888-478-4522) (toll free in USA), or 1(312) 455-8498 (outside USA)  
E: [proteintech@ptglab.com](mailto:proteintech@ptglab.com)  
W: [ptglab.com](http://ptglab.com)

This product is exclusively available under Proteintech Group brand and is not available to purchase from any other manufacturer.

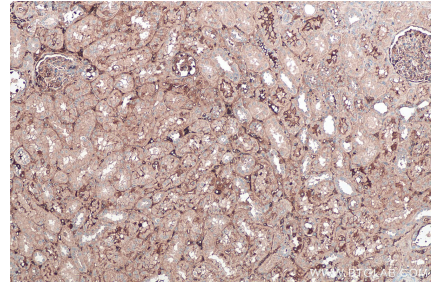
## Selected Validation Data



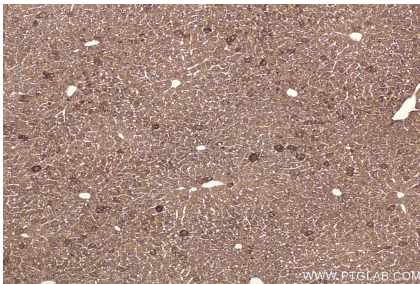
Immunohistochemical analysis of paraffin-embedded human liver tissue slide using KHC0388 (Fibrinogen Beta Chain IHC Kit).



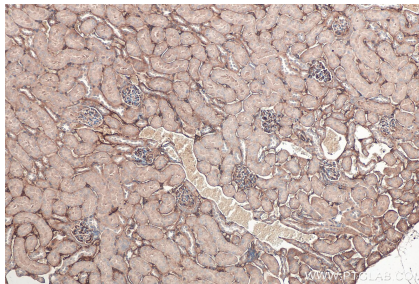
Immunohistochemical analysis of paraffin-embedded human liver cancer tissue slide using KHC0388 (Fibrinogen Beta Chain IHC Kit).



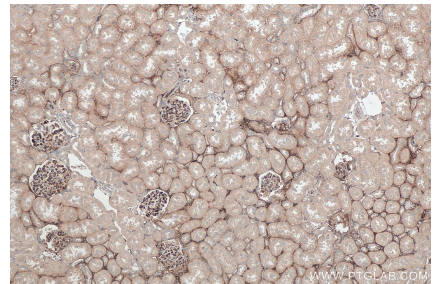
Immunohistochemical analysis of paraffin-embedded human kidney tissue slide using KHC0388 (Fibrinogen Beta Chain IHC Kit).



Immunohistochemical analysis of paraffin-embedded mouse liver tissue slide using KHC0388 (Fibrinogen Beta Chain IHC Kit).



Immunohistochemical analysis of paraffin-embedded mouse kidney tissue slide using KHC0388 (Fibrinogen Beta Chain IHC Kit).



Immunohistochemical analysis of paraffin-embedded rat kidney tissue slide using KHC0388 (Fibrinogen Beta Chain IHC Kit).