

# IHCeasy<sup>®</sup> CD10 Ready-To-Use IHC Kit

Catalog Number: **KHC0386**

## General Information

Sample type:  
FFPE tissue  
Cited sample type:  
Reactivity:  
Human  
Cited Reactivity:

Assay type:  
Immunohistochemistry  
Primary antibody type:  
Mouse Monoclonal  
Secondary antibody type:  
Polymer-HRP-Goat anti-Mouse

## Kit Component

Component	Size	Concentration
Antigen Retrieval Buffer	100 mL	50×
Washing Buffer	100 mL ×2	20×
Blocking Buffer	5 mL	RTU
Primary Antibody	5 mL	RTU
Secondary Antibody	5 mL	RTU
Chromogen Component A	0.2 mL	RTU
Chromogen Component B	4 mL	RTU
Signal Enhancer	5 mL	RTU
Counter Staining Reagent	5 mL	RTU
Mounting Media	5 mL	RTU
Control Slide	1 slide (Optional)	FFPE
Datasheet	1 Copy	
Manual	1 Copy	

## Storage Instructions

All the reagents are stored at 2-8°C. The kit is stable for 6 months from the date of receipt.

## Background

CD10 is also names as neprilysin, CALLA, NEP, SFE, MME and belongs to the peptidase M13 family. It is a glycoprotein that is particularly abundant in kidney, where it is present on the brush border of proximal tubules and on glomerular epithelium. CD10 has been considered a useful marker in the diagnosis of renal carcinomas, because of its expression in clear cell and papillary renal cell carcinomas and its absence in chromophobe renal cell carcinomas.

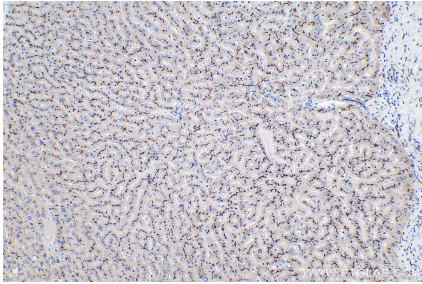
## Synonyms

Atriopeptidase, CALLA, CD10, Enkephalinase, EPN, membrane metallo endopeptidase, MME, MME, CD10, NEP, Neprilysin, Neutral endopeptidase, Neutral endopeptidase 24.11

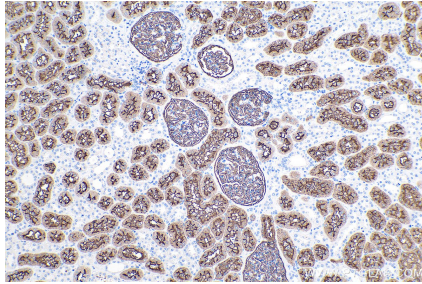
For technical support and original validation data for this product please contact:  
T: 1 (888) 4PTGLAB (1-888-478-4522) (toll free in USA), or 1(312) 455-8498 (outside USA)  
E: [proteintech@ptglab.com](mailto:proteintech@ptglab.com)  
W: [ptglab.com](http://ptglab.com)

This product is exclusively available under Proteintech Group brand and is not available to purchase from any other manufacturer.

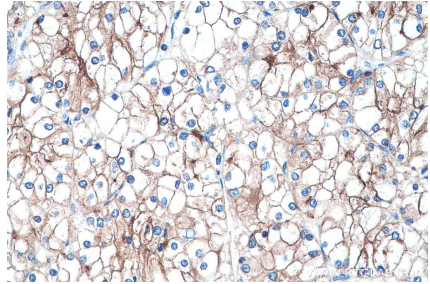
## Selected Validation Data



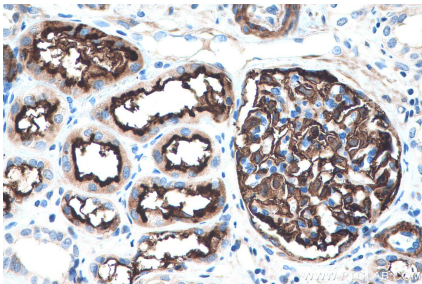
Immunohistochemical analysis of paraffin-embedded human liver tissue slide using KHC0386 (CD10 IHC Kit).



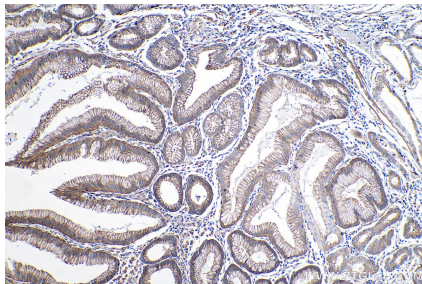
Immunohistochemical analysis of paraffin-embedded human kidney tissue slide using KHC0386 (CD10 IHC Kit).



Immunohistochemical analysis of paraffin-embedded human renal cell carcinoma tissue slide using KHC0386 (CD10 IHC Kit).



Immunohistochemical analysis of paraffin-embedded human renal cell carcinoma tissue(NAT) slide using KHC0386 (CD10 IHC Kit).



Immunohistochemical analysis of paraffin-embedded human stomach cancer tissue slide using KHC0386 (CD10 IHC Kit).