

IHC*easy* ALB Ready-To-Use IHC Kit

Catalog Number: **KHC0376**

General Information

Sample type:
FFPE tissue
Cited sample type:
Reactivity:
Human
Cited Reactivity:

Assay type:
Immunohistochemistry
Primary antibody type:
Mouse Monoclonal
Secondary antibody type:
Polymer-HRP-Goat anti-Mouse

Kit Component

| Component | Size | Concentration |
|--------------------------|--------------------|---------------|
| Antigen Retrieval Buffer | 100 mL | 50× |
| Washing Buffer | 100 mL ×2 | 20× |
| Blocking Buffer | 5 mL | RTU |
| Primary Antibody | 5 mL | RTU |
| Secondary Antibody | 5 mL | RTU |
| Chromogen Component A | 0.2 mL | RTU |
| Chromogen Component B | 4 mL | RTU |
| Signal Enhancer | 5 mL | RTU |
| Counter Staining Reagent | 5 mL | RTU |
| Mounting Media | 5 mL | RTU |
| Control Slide | 1 slide (Optional) | FFPE |
| Datasheet | 1 Copy | |
| Manual | 1 Copy | |

Storage Instructions

All the reagents are stored at 2-8°C. The kit is stable for 6 months from the date of receipt.

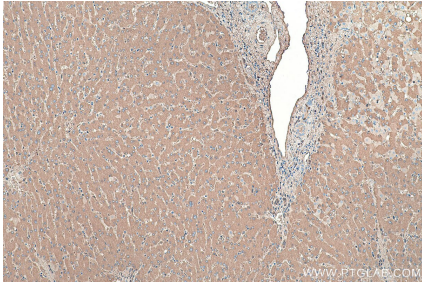
Background

Albumin is the most abundant protein in blood plasma. Alterations of level of serum albumin are linked to variety of diseases. Albumin is expressed exclusively by well-differentiated hepatocytes, thus anti-albumin has been used to mark hepatocytes. In addition, glycated serum albumin is also a potential diabetes biomarker.

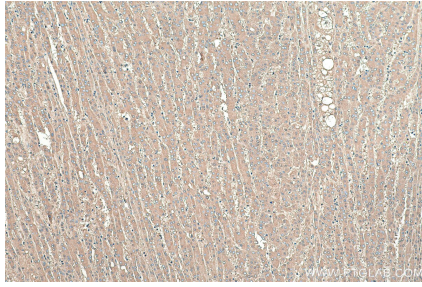
Synonyms

Alb, albumin, HSA, Serum albumin

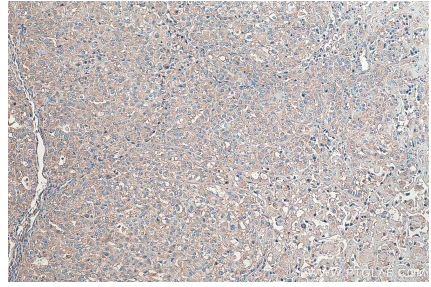
Selected Validation Data



Immunohistochemical analysis of paraffin-embedded human liver tissue slide using KHC0376 (ALB IHC Kit).



Immunohistochemical analysis of paraffin-embedded human liver cancer tissue slide using KHC0376 (ALB IHC Kit).



Immunohistochemical analysis of paraffin-embedded human endometrial cancer tissue slide using KHC0376 (ALB IHC Kit).