

# IHC*easy* MYL6 Ready-To-Use IHC Kit

Catalog Number: **KHC0342**

## General Information

**Sample type:**  
FFPE tissue

**Cited sample type:**

**Reactivity:**  
Human, Mouse, Rat

**Cited Reactivity:**

**Assay type:**  
Immunohistochemistry

**Primary antibody type:**  
Mouse Monoclonal

**Secondary antibody type:**  
Polymer-HRP-Goat anti-Mouse

## Kit Component

Component	Size	Concentration
Antigen Retrieval Buffer	100 mL	50×
Washing Buffer	100 mL ×2	20×
Blocking Buffer	5 mL	RTU
Primary Antibody	5 mL	RTU
Secondary Antibody	5 mL	RTU
Chromogen Component A	0.2 mL	RTU
Chromogen Component B	4 mL	RTU
Signal Enhancer	5 mL	RTU
Counter Staining Reagent	5 mL	RTU
Mounting Media	5 mL	RTU
Control Slide	1 slide (Optional)	FFPE
Datasheet	1 Copy	
Manual	1 Copy	

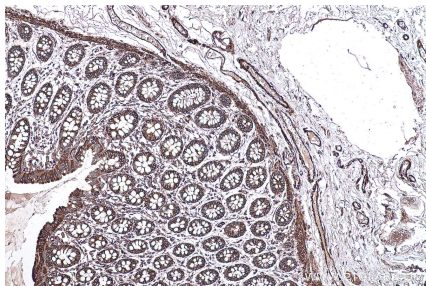
## Storage Instructions

All the reagents are stored at 2-8°C. The kit is stable for 6 months from the date of receipt.

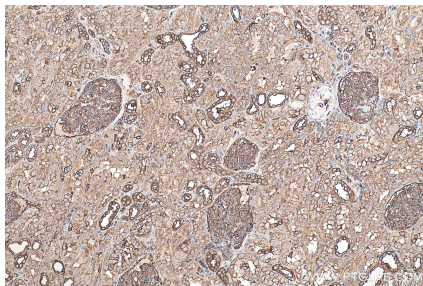
## Synonyms

17 kDa myosin light chain, ESMLC, LC17, LC17 GI, LC17 NM, LC17A, LC17B, MLC 3, MLC1SM, MLC3NM, MLC3SM, MYL6, Myosin light chain 3, Myosin light chain A3, Myosin light chain alkali 3, Myosin light polypeptide 6

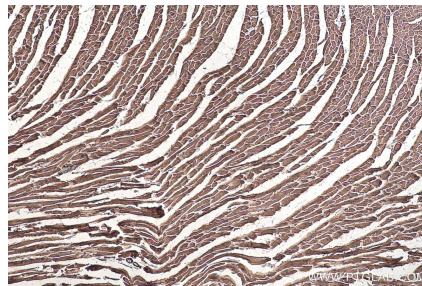
## Selected Validation Data



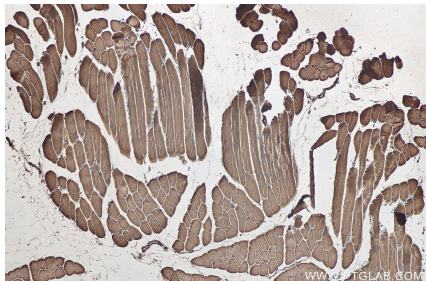
Immunohistochemical analysis of paraffin-embedded human colon tissue slide using KHC0342 (MYL6 IHC Kit).



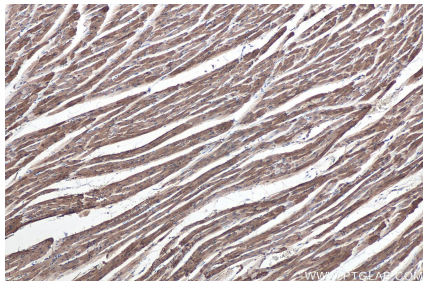
Immunohistochemical analysis of paraffin-embedded human kidney tissue slide using KHC0342 (MYL6 IHC Kit).



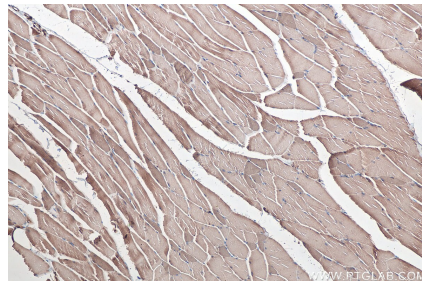
Immunohistochemical analysis of paraffin-embedded mouse heart tissue slide using KHC0342 (MYL6 IHC Kit).



Immunohistochemical analysis of paraffin-embedded mouse skeletal muscle tissue slide using KHC0342 (MYL6 IHC Kit).



Immunohistochemical analysis of paraffin-embedded rat heart tissue slide using KHC0342 (MYL6 IHC Kit).



Immunohistochemical analysis of paraffin-embedded rat skeletal muscle tissue slide using KHC0342 (MYL6 IHC Kit).