

# IHCeasy Phospho-RPS6KA1 (Ser380) Ready-To-Use IHC Kit

Catalog Number: **KHC0292**

## General Information

Sample type: FFPE tissue	Assay type: Immunohistochemistry
Cited sample type:	Primary antibody type: Rabbit Recombinant
Reactivity: Human	Secondary antibody type: Polymer-HRP-Goat anti-Rabbit
Cited Reactivity:	

## Kit Component

Component	Size	Concentration
Antigen Retrieval Buffer	100 mL	50×
Washing Buffer	100 mL ×2	20×
Blocking Buffer	5 mL	RTU
Primary Antibody	5 mL	RTU
Secondary Antibody	5 mL	RTU
Chromogen Component A	0.2 mL	RTU
Chromogen Component B	4 mL	RTU
Signal Enhancer	5 mL	RTU
Counter Staining Reagent	5 mL	RTU
Mounting Media	5 mL	RTU
Control Slide	1 slide (Optional)	FFPE
Datasheet	1 Copy	
Manual	1 Copy	

## Storage Instructions

All the reagents are stored at 2-8°C. The kit is stable for 6 months from the date of receipt.

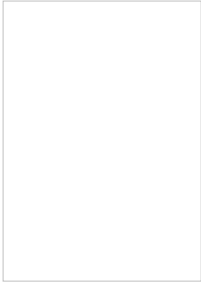
## Background

Ribosomal S6 kinases (RSK1-4) are a family of widely expressed serine/threonine kinases and play an important role in the MAPK signaling cascade and act downstream of ERK1/2 signaling. It can mediate mitogenic and stress-induced activation of the transcription factors CREB1, ETV1/ER81 and NR4A1/NUR77. RSK1 (RPS6KA1) is also designated as p90RSK associated with cellular proliferation, survival and differentiation. It has been reported that the phosphorylation of RPS6KA1 at Ser380 is involved in autophosphorylation by activation of the C-terminal kinase domain.

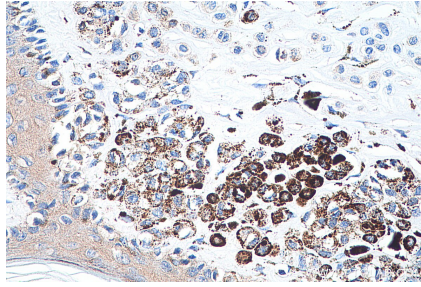
## Synonyms

HU 1, MAPKAP kinase 1a, MAPKAPK 1a, MAPKAPK1A, p90 RSK 1, p90RSK1, p90S6K, Phospho-RPS6KA1 (Ser380), Ribosomal S6 kinase 1, RPS6KA1, RSK, RSK 1, RSK1, S6K alpha 1

## Selected Validation Data



Immunohistochemical analysis of paraffin-embedded Jurkat (left) and calyculin A treated Jurkat (right) cells slide using KHC0292 (Phospho-RPS6KA1 (Ser380) IHC Kit).



Immunohistochemical analysis of paraffin-embedded human malignant melanoma tissue slide using KHC0292 (Phospho-RPS6KA1 (Ser380) IHC Kit).