

IHC*easy* MAGEC2 Ready-To-Use IHC Kit

Catalog Number: **KHC0272**

General Information

Sample type:
FFPE tissue
Cited sample type:
Reactivity:
Human
Cited Reactivity:

Assay type:
Immunohistochemistry
Primary antibody type:
Rabbit Polyclonal
Secondary antibody type:
Polymer-HRP-Goat anti-Rabbit

Kit Component

Component	Size	Concentration
Antigen Retrieval Buffer	100 mL	50×
Washing Buffer	100 mL ×2	20×
Blocking Buffer	5 mL	RTU
Primary Antibody	5 mL	RTU
Secondary Antibody	5 mL	RTU
Chromogen Component A	0.2 mL	RTU
Chromogen Component B	4 mL	RTU
Signal Enhancer	5 mL	RTU
Counter Staining Reagent	5 mL	RTU
Mounting Media	5 mL	RTU
Control Slide	1 slide (Optional)	FFPE
Datasheet	1 Copy	
Manual	1 Copy	

Storage Instructions

All the reagents are stored at 2-8°C. The kit is stable for 6 months from the date of receipt.

Background

Melanoma antigen family C, 2 (MAGEC2, synonyms: CT10, HCA587, MAGEE1, MGC13377) is related to members of the MAGEC gene family. MAGEC2 is not expressed in normal tissues, except for testis, and is expressed in tumors of various histological types. This gene and other MAGEC genes are clustered on chromosome Xq26-q27.

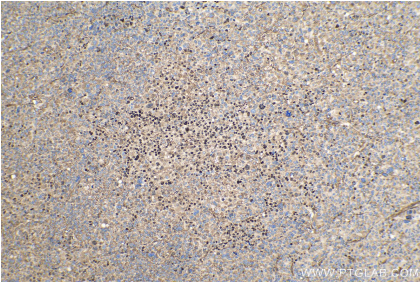
Synonyms

Cancer/testis antigen 10, CT10, HCA587, MAGE C2 antigen, MAGE E1 antigen, MAGEC2, MAGEE1, melanoma antigen family C, 2, Melanoma associated antigen C2

For technical support and original validation data for this product please contact:
T: 1 (888) 4PTGLAB (1-888-478-4522) (toll free in USA), or 1(312) 455-8498 (outside USA)
E: proteintech@ptglab.com
W: ptglab.com

This product is exclusively available under Proteintech Group brand and is not available to purchase from any other manufacturer.

Selected Validation Data



Immunohistochemical analysis of paraffin-embedded human liver cancer tissue slide using KHC0272 (MAGEC2 IHC Kit).