

# IHC*easy* CYFIP2 Ready-To-Use IHC Kit

Catalog Number: **KHC0253**

## General Information

**Sample type:**  
FFPE tissue

**Cited sample type:**

**Reactivity:**  
Human, Mouse, Rat

**Cited Reactivity:**

**Assay type:**  
Immunohistochemistry

**Primary antibody type:**  
Rabbit Polyclonal

**Secondary antibody type:**  
Polymer-HRP-Goat anti-Rabbit

## Kit Component

Component	Size	Concentration
Antigen Retrieval Buffer	100 mL	50×
Washing Buffer	100 mL × 2	20×
Blocking Buffer	5 mL	RTU
Primary Antibody	5 mL	RTU
Secondary Antibody	5 mL	RTU
Chromogen Component A	0.2 mL	RTU
Chromogen Component B	4 mL	RTU
Signal Enhancer	5 mL	RTU
Counter Staining Reagent	5 mL	RTU
Mounting Media	5 mL	RTU
Control Slide	1 slide (Optional)	FFPE
Datasheet	1 Copy	
Manual	1 Copy	

## Storage Instructions

All the reagents are stored at 2-8°C. The kit is stable for 6 months from the date of receipt.

## Background

CYFIP1/2 belongs to the CYFIP family and is involved in T-cell adhesion and p53-dependent induction of apoptosis. CYFIP1 contains 1,253 amino acids and shares 88% sequence identity with CYFIP2. CYFIP1 and CYFIP2 are members of a highly conserved protein family and share approximately 99% sequence identity with their mouse orthologs. CYFIP1 has been shown to interact with the small GTPase RAC1, which is implicated in development and maintenance of neuronal structures. Consistent with FMRP and RAC1 localization in dendritic fine structures, CYFIP1/2 are present in synaptosomal extracts. Primary antibody in this kit can recognize both CYFIP1 and CYFIP2.

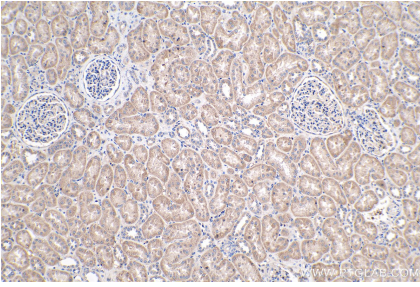
## Synonyms

CYFIP1/2, CYFIP2, KIAA1168, p53 inducible protein 121, PIR121

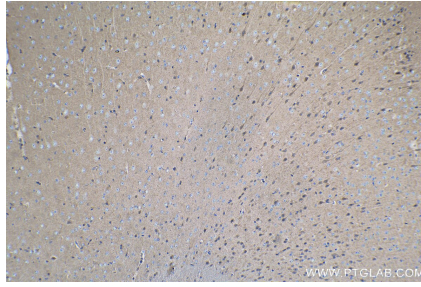
For technical support and original validation data for this product please contact:  
T: 1 (888) 4PTGLAB (1-888-478-4522) (toll free in USA), or 1(312) 455-8498 (outside USA)  
E: [proteintech@ptglab.com](mailto:proteintech@ptglab.com)  
W: [ptglab.com](http://ptglab.com)

This product is exclusively available under Proteintech Group brand and is not available to purchase from any other manufacturer.

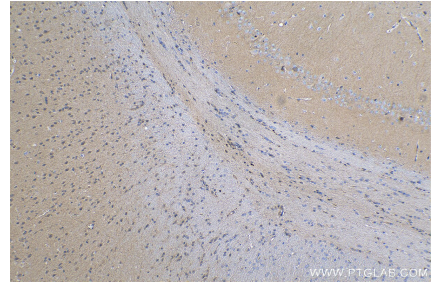
## Selected Validation Data



Immunohistochemical analysis of paraffin-embedded human kidney tissue slide using KHC0253 (CYFIP2 IHC Kit).



Immunohistochemical analysis of paraffin-embedded mouse brain tissue slide using KHC0253 (CYFIP2 IHC Kit).



Immunohistochemical analysis of paraffin-embedded rat brain tissue slide using KHC0253 (CYFIP2 IHC Kit).