

# IHC*easy* DDR1 Ready-To-Use IHC Kit

Catalog Number: **KHC0129**

## General Information

Sample type:  
FFPE tissue  
Cited sample type:  
Reactivity:  
Human  
Cited Reactivity:

Assay type:  
Immunohistochemistry  
Primary antibody type:  
Rabbit Polyclonal  
Secondary antibody type:  
Polymer-HRP-Goat anti-Rabbit

## Kit Component

Component	Size	Concentration
Antigen Retrieval Buffer	100 mL	50×
Washing Buffer	100 mL ×2	20×
Blocking Buffer	5 mL	RTU
Primary Antibody	5 mL	RTU
Secondary Antibody	5 mL	RTU
Chromogen Component A	0.2 mL	RTU
Chromogen Component B	4 mL	RTU
Signal Enhancer	5 mL	RTU
Counter Staining Reagent	5 mL	RTU
Mounting Media	5 mL	RTU
Control Slide	1 slide (Optional)	FFPE
Datasheet	1 Copy	
Manual	1 Copy	

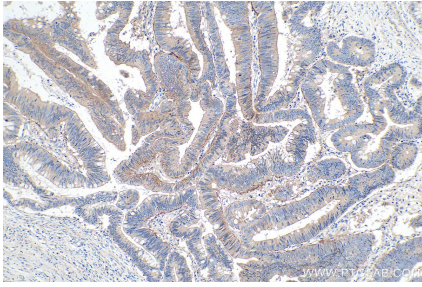
## Storage Instructions

All the reagents are stored at 2-8°C. The kit is stable for 6 months from the date of receipt.

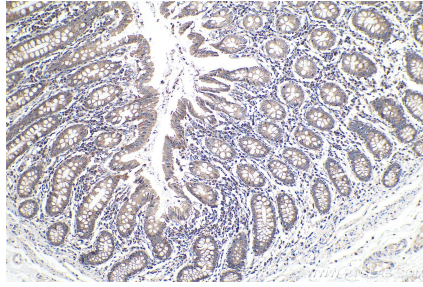
## Synonyms

CAK, CD167, Cell adhesion kinase, DDR, DDR1, EDDR1, HGK2, Mammary carcinoma kinase 10, MCK 10, MCK10, NEP, NTRK4, Protein tyrosine kinase 3A, Protein tyrosine kinase RTK 6, PTK3, PTK3A, RTK6, TRK E, TRKE, Tyrosine kinase DDR, Tyrosine protein kinase CAK

## Selected Validation Data



Immunohistochemical analysis of paraffin-embedded human colon cancer tissue slide using KHC0129 (DDR1 IHC Kit).



Immunohistochemical analysis of paraffin-embedded human colon tissue slide using KHC0129 (DDR1 IHC Kit).