

IHC*easy* PTPRO Ready-To-Use IHC Kit

Catalog Number: **KHC0082**

General Information

Sample type:
FFPE tissue

Cited sample type:

Reactivity:
Human, Mouse

Cited Reactivity:

Assay type:
Immunohistochemistry

Primary antibody type:
Mouse Monoclonal

Secondary antibody type:
Polymer-HRP-Goat anti-Mouse

Kit Component

Component	Size	Concentration
Antigen Retrieval Buffer	100 mL	50×
Washing Buffer	100 mL ×2	20×
Blocking Buffer	5 mL	RTU
Primary Antibody	5 mL	RTU
Secondary Antibody	5 mL	RTU
Chromogen Component A	0.2 mL	RTU
Chromogen Component B	4 mL	RTU
Signal Enhancer	5 mL	RTU
Counter Staining Reagent	5 mL	RTU
Mounting Media	5 mL	RTU
Control Slide	1 slide (Optional)	FFPE
Datasheet	1 Copy	
Manual	1 Copy	

Storage Instructions

All the reagents are stored at 2-8°C. The kit is stable for 6 months from the date of receipt.

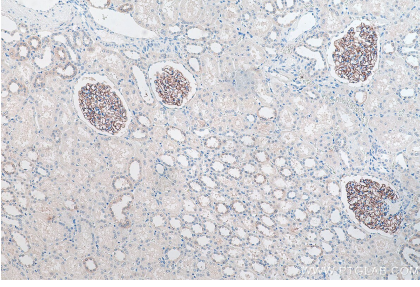
Background

PTPRO (receptor-type tyrosine-protein phosphatase O) is also named as GLEPP1, PTPU2 and belongs to the protein-tyrosine phosphatase family. The protein is a receptor-like membrane protein tyrosine phosphatase expressed at the apical membrane of the podocyte foot processes in the kidney (PMID:21722858). PTPRO has been frequently reported as potential tumor suppressor in many types of cancer.

Synonyms

GLEPP1, PTP U2, PTPase U2, PTPRO, PTPU2, R PTP O

Selected Validation Data



Immunohistochemical analysis of paraffin-embedded human kidney tissue slide using KHC0082 (PTPRO IHC Kit).