

chromotek® His Fab-Trap® Magnetic Particles M-270 Kit

Product Code: hfdk

Product Information

Description: The ChromoTek His Fab-Trap® Magnetic Particles M-270 Kit consists of an anti-His Fab-fragment, which is coupled to magnetic particles. It also contains lysis, wash, and elution buffers that can be used for the immunoprecipitation of His-fusion proteins from cell extracts of various organisms. It is highly recommended when very large proteins/complexes are being investigated.

Applications: IP, Co-IP

Specificity/Target: Binds specifically to the His-tag (also known as hexahistidine or His₆-tag) fused to a protein of interest at N-, C- or internal position. Please note that the affinity is highest for a C-terminal fusion (dissociation constant K_D of 10 nM for a C-terminal His-tag and 220 nM for an N-terminal His-tag).

Binding capacity: 1 µg of recombinant His-tagged protein (~30 kDa) per 25 µL bead slurry

Bead Size: Magnetic Particles M-270; size 2.8 µM

Elution Buffer: 2x SDS-sample buffer (Lämmli), 200 mM glycine pH 2.5, 100 µM His-Peptide

Wash Buffer Compatibility: 2 M NaCl, 5 mM DTT, 5 mM β-mercaptoethanol, 5 mM TCEP, 2% NP40, 2% Triton X-100, <0.1% SDS, 3-4 M Urea

Ligand: Anti-His₆-Fab-fragment

Clone: Fab fragment of monoclonal mouse IgG1 1B7G5

Host: Mouse

Shipment: Shipped at ambient temperature

Storage Buffer: PBS pH 7.4. Preservative: 0.09 % sodium azide

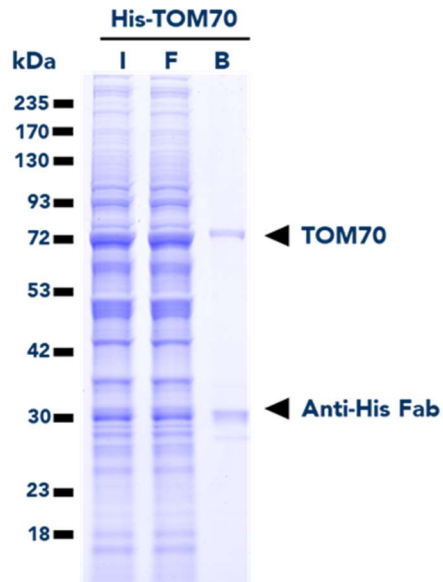
Storage Condition: Upon receipt store at +4°C. Do not freeze!

Stability: Stable for 1 year upon receipt

chromotek[®] His Fab-Trap[®] Magnetic Particles M-270 Kit

Product Code: hfdk

Selected Validation Data



Immunoprecipitation of His-TOM70 protein using His Fab-Trap[®] Magnetic Particles M-270. I: Input, F: Flow-through, B: Bound.

Kit Components

Component	Composition	Quantity
His Fab-Trap [®] Magnetic Particles M-270	Anti-His-tag Fab-fragment, cross-linked with magnetic particles	20 rxns (500 ul slurry)
Lysis Buffer	10 mM Tris/Cl pH 7.5, 150 mM NaCl, 0.5 mM EDTA, 0.5 % Nonidet [™] P40 Substitute, 0.09 % sodium azide	30 mL
RIPA Buffer	10 mM Tris/Cl pH 7.5, 150 mM NaCl, 0.5 mM EDTA, 0.1 % SDS, 1 % Triton [™] X-100, 1 % Deoxycholate, 0.09 % sodium azide	30 ml
Dilution Buffer	10 mM Tris/Cl pH 7.5, 150 mM NaCl, 0.5 mM EDTA, 0.018 % sodium azide	50 mL (after dilution with 40 mL water)
Wash Buffer	10 mM Tris/Cl pH 7.5, 150 mM NaCl, 0.05 % Nonidet [™] P40 Substitute, 0.5 mM EDTA, 0.018 % sodium azide	50 mL (after dilution with 40 mL water)
Acidic elution buffer	200 mM glycine pH 2.5	3 x 1 mL

Note: Use your equivalent cell lysis buffer for other cell types like yeast, plants, insects, bacteria. Consider using a Wash buffer without detergent for Co-IP.

chromotek® His Fab-Trap® Magnetic Particles M-270 Kit

Product Code: hfdk

Required Buffer Solutions

Buffer	Composition
2x SDS-sample buffer	120 mM Tris/Cl pH 6.8, 20% glycerol, 4% SDS, 0.04% bromophenol blue, 10% β-mercaptoethanol
Neutralization buffer	1M Tris pH 10.4 (adjust the pH at +4°C

Product Sizes

Product	Product Code	Size
His Fab-Trap® Magnetic Particles M-270	hfdk-20	20 reactions including buffers

chromotek® His Fab-Trap® Magnetic Particles M-270 Kit

Product Code: hfdk

Protocol at a glance

General

- Perform all steps at 4°C
- Use your preferred cell lysis buffer and cell lysis conditions

Cell Lysis



- Use 10^6 - 10^7 cells and 200 μ L Lysis buffer.
- Perform cell lysis and clear lysate
- Mix 200 μ L cleared lysate with 300 μ L dilution buffer.

Bead Equilibration



- Transfer 25 μ L bead slurry into a 1.5 mL tube
- Equilibrate beads 3x with 500 μ L dilution buffer

Protein binding



- Add 500 μ L diluted lysate to beads
- Rotate end-over-end for 1 hour at 4°C.

Washing



- Wash beads 3x with 500 μ L wash buffer
- Transfer beads to a new tube during the last washing step

Elution with SDS-sample buffer



- Resuspend beads in 80 μ L 2x SDS-sample buffer
- Boil beads for 5 min at 95°C
- Analyze the supernatant in SDS-PAGE/ Western Blot

chromotek® His Fab-Trap® Magnetic Particles M-270 Kit

Product Code: hfdk

Immunoprecipitation Protocol

Cell Material

The following protocol describes the preparation of a mammalian cell lysate.

For other type of cells, we recommend using 500 µg of cell extract and start the protocol with step Bead equilibration.

Mammalian Cell Lysis

Note: Harvesting of cells and cell lysis should be performed with ice-cold buffers. We strongly recommend adding protease inhibitors to the Lysis buffer to prevent degradation of your target protein and its binding partners.

For one immunoprecipitation reaction, we recommend using $\sim 10^6$ - 10^7 cells.

1. Choice of lysis buffer:
 - a. For cytoplasmic proteins, resuspend the cell pellet in 200 µL ice-cold Lysis buffer by pipetting up and down. Supplement Lysis buffer with protease inhibitor cocktail and 1 mM PMSF (not included).
 - b. For nuclear/chromatin proteins, resuspend cell pellet in 200 µL ice-cold RIPA buffer supplemented with DNase I (f.c. 75-150 Kunitz U/mL), $MgCl_2$ (f.c. 2.5 mM), protease inhibitor cocktail and PMSF (f.c. 1 mM) (not included).
2. Place the tube on ice for 30 min and extensively pipette the suspension every 10 min.
3. Centrifuge cell lysate at 17,000x g for 10 min at +4°C. Transfer cleared lysate (supernatant) to a pre-cooled tube and add 300 µL Dilution buffer supplemented with 1 mM PMSF and protease inhibitor cocktail (not included). If required, save 50 µL of diluted lysate for further analysis (input fraction).

Bead Equilibration

1. Resuspend the beads by gently pipetting them up and down or by inverting the tube. Do not vortex the beads!
2. Transfer 25 µL of bead slurry into a 1.5 mL reaction tube.
3. Add 500 µL ice-cold Dilution buffer.
4. Separate the beads with a magnet until the supernatant is clear. Discard the supernatant.

Protein Binding

1. Add diluted lysate to the equilibrated beads.
2. Rotate end-over-end for 1 hour at +4°C.

Washing

1. Separate the beads with a magnet until the supernatant is clear.
2. If required, save 50 µL of supernatant for further analysis (flow-through/non-bound fraction).
3. Discard remaining supernatant.

chromotek® His Fab-Trap® Magnetic Particles M-270 Kit

Product Code: hfdk

4. Resuspend beads in 500 μ L Wash buffer.
5. Separate the beads with a magnet until the supernatant is clear. Discard the remaining supernatant.
6. Repeat this step at least twice.
7. During the last washing step, transfer the beads to a new tube.

Optional: To increase stringency of the Wash buffer, test various salt concentrations e.g. 150-500 mM, and/or add a non-ionic detergent e.g. Triton™ X-100 (see Wash buffer compatibility information for maximal concentrations).

Elution with 2x SDS-sample buffer (Laemmli)

1. Remove the remaining supernatant.
2. Resuspend beads in 80 μ L 2x SDS-sample buffer.
3. Boil beads for 5 min at +95°C to dissociate immunocomplexes from beads.
4. Separate the beads with a magnet.
5. Analyze the supernatant in SDS-PAGE / Western Blot.

Elution with Acidic Elution Buffer

1. Remove the remaining supernatant.
2. Add 50-100 μ L Acidic elution buffer and constantly pipette up and down for 30-60 sec at +4°C or room temperature.
3. Separate the beads with a magnet until the supernatant is clear.
4. Transfer the supernatant to a new tube.
5. Immediately neutralize the eluate fraction with 5-10 μ L Neutralization buffer.
6. Repeat this step at least once to increase elution efficiency.

Note: Elution at room temperature is more efficient than elution at +4°C. Prewarm buffers for elution at room temperature.

Elution with His-Peptide

1. Reconstitute 1 mg His-Peptide (hp-1) in 1190 μ L PBS, which results in a final concentration of 1 mM. Vortex for 1 min to dissolve the powder and dilute to 100 μ M for the working solution.
2. Remove the remaining supernatant.
3. Add 80 μ L His-Peptide (100 μ M) and mix using a pipette.
4. Incubate at 4-37 °C for 5 min under regular pipetting to ensure thorough mixing.
5. Separate the beads with a magnet until the supernatant is clear.
6. Transfer the supernatant to a new tube.
7. Repeat this step at least once to increase elution efficiency.

Note: Elution will be most efficient for N-terminal and internal His-tag fusions even at 4 °C. For C-terminal His-tag fusions, elute at 37 °C for up to 10 min.

chromotek® His Fab-Trap® Magnetic Particles M-270 Kit

Product Code: hfdk

Related Products

Product	Code
His Fab-Trap® Agarose	hfa
His Fab-Trap® Agarose Kit	hfak
His Fab-Trap® Magnetic Agarose	hfma
His Fab-Trap® Magnetic Agarose Kit	hfma
His Fab-Trap® Magnetic Particles M-270	hfdk
His-Peptide	hp-1

Contact**Proteintech North America (HQ)**

Proteintech Group, Inc.
5500 Pearl Street, Suite 400
Rosemont, IL 60018 USA

1-888-472-4522
proteintech@ptglab.com

Proteintech Europe

Transmission (6th Fl)
6 Atherton Street
M3 3GS, Manchester, UK

+44 161 839 3007
europe@ptglab.com

ChromoTek & Proteintech Germany

Fraunhoferstr. 1
82152, Planegg-Martinsreid
Germany

+49 89 124 148 850
germany@ptglab.com

Disclaimer

For research use only (RUO), not for diagnostic or therapeutic use.
ChromoTek® and Fab-Trap® are registered trademarks of ChromoTek GmbH, part of Proteintech Group.