

**HumanKine<sup>®</sup> CNTF (Recombinant Human)**



Animal Component-Free	Human cell expressed	Tag-Free	Endotoxin Free
-----------------------	----------------------	----------	----------------

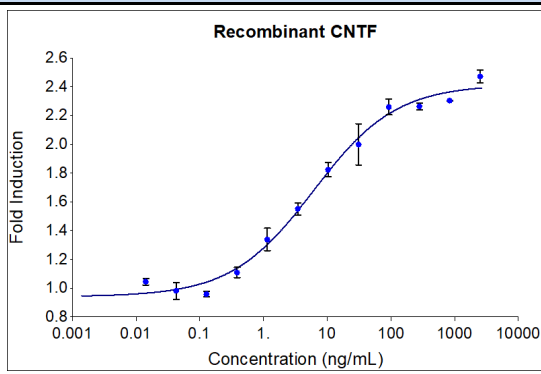
**Product Description**

Alternative Names	Ciliary Neurotrophic Factor
Source	Human Embryonic Kidney cells (HEK293). HEK293-derived CNTF protein
Species Reactivity	human

**Specifications**

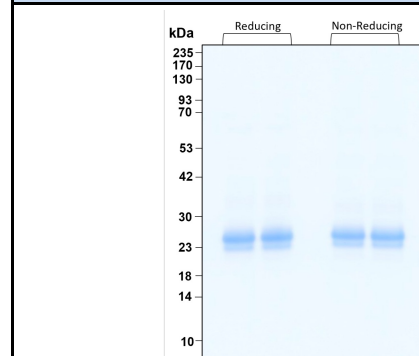
Test	Method	Specification
Activity	Dose-Dependent secretion of Haptoglobin in response to CNTF in HEPG2 Hepatocellular carcinoma cells in the presence of 100 ng/mL CNTFR	2.75-14 ng/mL EC50
Molecular Mass	SDS-PAGE	23-27 kDa reduced and non-reduced, monomer, non-glycosylated
Purity	SDS-PAGE	>95%
Endotoxin	LAL	<1 EU/μg

**Activity Data**



Recombinant human CNTF (Cat no: HZ-1331) induces dose-dependent release of Haptoglobin in the HEPG2 hepatocellular carcinoma cell line in the presence of 200 ng/mL CNTFR. HEPG2 cells were treated with increasing concentration of recombinant CNTF for 16 hours before supernatant collection. The supernatant was tested for Haptoglobin via ELISA kit (KE00148). The EC50 was determined using

**SDS-PAGE**



Preparation	
Shipping Temperature	ambient temperature
Formulation	1x PBS, See Certificate of Analysis for details
Reconstitution	Briefly centrifuge the vial before opening. It is recommended to reconstitute the protein in sterile 1x PBS pH 7.4 containing 0.1% endotoxin-free recombinant human serum albumin (HSA).

Stability and Storage	Product Form	Temperature Conditions	Storage Time (From Date of Receipt)
	Lyophilized	-20°C to -80°C	Until Expiry Date
	Lyophilized	Room Temperature	2 weeks
	Reconstituted as per CofA	-20°C to -80°C	6 months
	Reconstituted as per CofA	4°C	1 week
Avoid repeated freeze-thaw cycles.			

[www.ptglab.com](http://www.ptglab.com)

Document #: FR-QA118-101 Rev 0  
Data Sheet Version #:

**Proteintech Group, Inc.**  
5500 Pearl Street, Suite 400 Rosemont, IL 60612  
t: 1-888-478-4522; f: 1-312-455-8408  
Email: [proteintech@ptglab.com](mailto:proteintech@ptglab.com)