

GMP HumanKine[®] IL-15 (Recombinant Human)



Animal Component-Free	Human cell expressed	Tag-Free	Endotoxin Free
-----------------------	----------------------	----------	----------------

Product Description

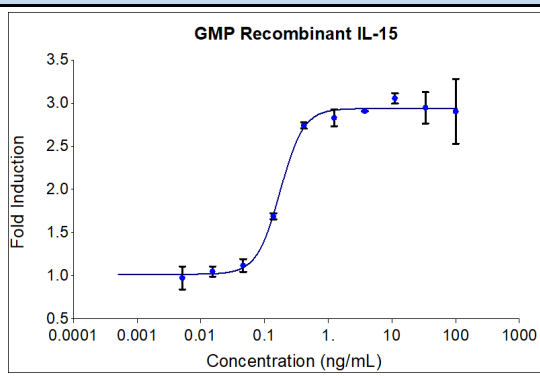
IL-15 is a 4- α -helix bundle cytokine playing a pivotal role in stimulation of both innate and adaptive immune cells. It is produced primarily by keratinocytes, skeletal muscle cells, monocytes, and CD4+ T cells. It is a member of the common gamma chain family. The members of the common gamma chain family include the IL-2, IL-4, IL-7, IL-9, and IL-21 and require binding to the common γ chain receptor for activation. It can be used in growth and maintenance of T and NK cells. It is also shown to be used in proliferation and functional effect of T cells for adoptive cell therapy. It is a glycosylated protein and HumanKine IL-15 appear as 12.5-25 kDa bands (PMID: 24587813, 26627006, 27849617, 31250350).

Alternative Names	Interleukin 15, IL15, IL-15MGC9721, Interleukin-15
Accession Number	P40933
Source	Human Embryonic Kidney cells (HEK293). HEK293-derived IL-15 protein
Adventitious Virus	Master Cell Bank tested Negative for Adventitious Viruses

Specifications

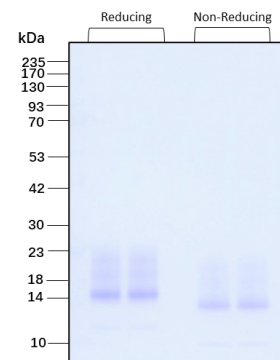
Test	Method	Specification
Activity	Dose dependent proliferation of the NK-92 human natural killer cell line.	0.07-0.37 ng/mL EC50 for NK-92 Bioassay. 3-17 ng/mL EC50 for MO7e Bioassay.
Molecular Mass	SDS-PAGE	11-23 kDa
Purity	SDS-PAGE	>95%
Endotoxin	LAL	< 0.1 EU/ μ g
Mycoplasma	PCR	Not Detected

Activity Data



Recombinant GMP human IL-15 (Cat no: HZ-1323-GMP) stimulates dose-dependent proliferation of the NK-92 human natural killer cell line. Cell number was quantitatively assessed by PrestoBlue[®] Cell Viability Reagent. NK-92 cells were treated with increasing concentrations of recombinant GMP IL-15 for 72 hours. The EC50 was determined using a 4-parameter non-linear

SDS-PAGE



The protein was resolved by SDS- polyacrylamide gel electrophoresis and the gel was stained with Coomassie blue.

Preparation	
Shipping Temperature	ambient temperature
Formulation	50 mM Acetate pH 4.0 + 150mM NaCl
Reconstitution	Briefly centrifuge the vial before opening. It is recommended to reconstitute the protein in sterile 1x PBS pH 7.4 containing 0.1% endotoxin-free recombinant human serum albumin (HSA).

Stability and Storage	Product Form	Temperature Conditions	Storage Time (From Date of Receipt)
	Lyophilized	-20°C to -80°C	Until Expiry Date
	Lyophilized	Room Temperature	2 weeks
	Reconstituted as per CofA	-20°C to -80°C	6 months
	Reconstituted as per CofA	4°C	1 week
Avoid repeated freeze-thaw cycles.			

Proteintech GMP Quality Policy HumanKine® GMP Proteins

In vitro recombinant protein production can be prone to variability due to various reasons ranging from quality of raw materials to inconsistency in the process. Therefore, HumanKine®, a proteintech brand's GMP proteins are produced and tested under an ISO 13485 certified quality management system in a clean room facility. Proteintech manufactures the GMP HumanKine® products according to the applicable sections in the following documents: USP Chapter 1043 (Ancillary Materials for Cell, Gene, and Tissue-Engineered Products, USP Chapter 92 (Growth Factors and Cytokines Used in Cell Therapy Manufacturing), WHO TRS, No. 822, 1992 Annex 1 (Good Manufacturing Practices for Biological Products), Ph. Eur. General Chapter 5.2.12, and EudraLex – Volume 4 – Part IV (Guidelines on GMP specific to ATMPs). Proteintech strives to achieve the utmost quality GMP raw material ensuring all applicable guidelines are taken into consideration.

The QMS is built to provide our customers with consistent and pure product delivered by documented processes, qualified personnel, validated processes, qualified equipment, qualified vendors, and a stringent final product release process. Although the final product release process is important, Proteintech performs in-process QC steps after each major manufacturing stage. Production records and facilities may be available for an inspection by approved personnel.

Our GMP policy covers all the aspects of production; from raw materials, facility, equipment, and Instruments to training and personal hygiene of staff. It also guarantees that the process is explicit, validated and well documented for transparency and traceability.

www.ptglab.com

Document #: FR-QA118-101 Rev 0
Data Sheet Version #: 1

Proteintech Group, Inc.
5500 Pearl Street, Suite 400 Rosemont, IL 60612
t: 1-888-478-4522; f: 1-312-455-8408
Email: proteintech@ptglab.com