

For Research Use Only

HRP-conjugated Beta Tubulin Recombinant antibody

Catalog Number:HRP-80713



Basic Information

Catalog Number: HRP-80713	GenBank Accession Number: BC000748	Purification Method: Protein A purification
Size: 100ul , Concentration: 1000 µg/ml by Nanodrop;	GeneID (NCBI): 10381	CloneNo.: 2013
Source: Rabbit	UNIPROT ID: Q13509	Recommended Dilutions: WB 1:2000-1:16000
Isotype: IgG	Full Name: tubulin, beta 3	
Immunogen Catalog Number: AG0117	Calculated MW: 450 aa, 50 kDa	
	Observed MW: 50-55 kDa	

Applications

Tested Applications: WB	Positive Controls: WB : HeLa cells, NIH/3T3 cells, Jurkat cells
Species Specificity: human, mouse, rat, zebrafish	

Background Information

There are five tubulins in human cells: alpha, beta, gamma, delta, and epsilon. Tubulins are conserved across species. They form heterodimers, which multimerize to form a microtubule filament. An alpha and beta tubulin heterodimer is the basic structural unit of microtubules. The heterodimer does not come apart, once formed. The alpha and beta tubulins, which are each about 55 kDa MW, are homologous but not identical. Alpha, beta, and gamma tubulins have all been used as loading controls. Tubulin expression may vary according to resistance to antimicrobial and antimetabolic drugs.

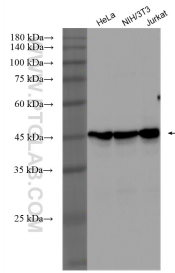
Storage

Storage:
Store at -20°C. Avoid exposure to light. Stable for one year after shipment.
Storage Buffer:
PBS with 50% Glycerol, 0.05% Proclin300, 0.5% BSA, pH 7.3.
Aliquoting is unnecessary for -20°C storage

For technical support and original validation data for this product please contact:
T: 1 (888) 4PTGLAB (1-888-478-4522) (toll free in USA), or 1(312) 455-8498 (outside USA)
E: proteintech@ptglab.com
W: ptglab.com

This product is exclusively available under Proteintech Group brand and is not available to purchase from any other manufacturer.

Selected Validation Data



Various lysates were subjected to SDS PAGE followed by western blot with HRP-80713 (Beta Tubulin antibody) at dilution of 1:8000 incubated at room temperature for 1.5 hours.