

For Research Use Only

# HRP-conjugated Heavy chain of Rabbit IgG Monoclonal antibody



Catalog Number: HRP-66467

2 Publications

## Basic Information

Catalog Number:  
HRP-66467

Size:  
100ul , Concentration: 1000 µg/ml by  
Nanodrop;

Source:  
Mouse

Isotype:  
IgG1

GenBank Accession Number:  
GeneID (NCBI):

Full Name:

Purification Method:  
Protein G purification

CloneNo.:  
1C9A5

Recommended Dilutions:  
WB 1:1000-1:5000

## Applications

Tested Applications:  
WB

Cited Applications:  
IP, WB

Species Specificity:  
rabbit

Cited Species:  
mouse

Positive Controls:

WB : Jurkat cells, HeLa cells, rabbit serum tissue

## Background Information

This antibody specifically recognizes the heavy chain of Rabbit IgG. It can't detect the The heavy chain of other species. This antibody can be used as the secondary antibody which is specific to the heavy chain of Rabbit IgG.

## Notable Publications

Author	Pubmed ID	Journal	Application
Tao Chen	38037211	FEBS J	IP
Jose Galaz	37121539	Transl Res	WB

## Storage

Storage:

Store at -20°C. Avoid exposure to light. Stable for one year after shipment.

Storage Buffer:

PBS with 50% Glycerol, 0.05% Proclin300, 0.5% BSA, pH 7.3.

Aliquoting is unnecessary for -20°C storage

\*\*\* 20ul sizes contain 0.1% BSA

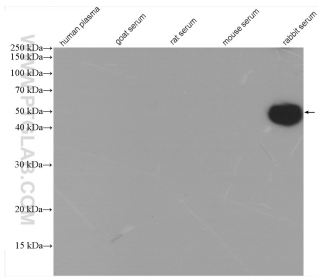
For technical support and original validation data for this product please contact:

T: 1 (888) 4PTGLAB (1-888-478-4522) (toll free  
in USA), or 1(312) 455-8498 (outside USA)

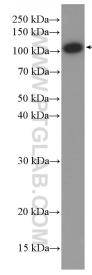
E: proteintech@ptglab.com  
W: ptglab.com

This product is exclusively available under Proteintech Group brand and is not available to purchase from any other manufacturer.

## Selected Validation Data



Various serum/plasma lysate were subjected to SDS PAGE followed by western blot with HRP-66467 (Heavy chain of Rabbit IgG antibody) at dilution of 1:15000 incubated at room temperature for 1.5 hours.



Jurkat cells were subjected to SDS PAGE followed by western blot with 17170-1-AP (IARS2 antibody) at dilution of 1:1000 incubated at room temperature for 1.5 hours. HRP-66467 (Heavy chain of Rabbit IgG antibody) as secondary antibody with dilution 1:15000.