

For Research Use Only

# FITC Plus Anti-Mouse Neutrophil elastase Rabbit Recombinant Antibody

Catalog Number: FITC-98197



## Basic Information

<b>Catalog Number:</b> FITC-98197	<b>GenBank Accession Number:</b> NM_015779.2	<b>Purification Method:</b> Protein A purification
<b>Size:</b> 100ug , 500 ug/ml	<b>GeneID (NCBI):</b> 50701	<b>CloneNo.:</b> 241842G3
<b>Source:</b> Rabbit	<b>UNIPROT ID:</b> Q3UP87	<b>Excitation/Emission maxima wavelengths:</b> 495 nm / 524 nm
<b>Isotype:</b> IgG	<b>Full Name:</b> elastase 2, neutrophil	
<b>Immunogen Catalog Number:</b> EG2126	<b>Calculated MW:</b> 29KD	

## Applications

**Tested Applications:**  
FC (Intra)

**Species Specificity:**  
mouse

## Background Information

ELA2 (Neutrophil elastase) is also named as ELAL, NE, HLE, HNE, PMN-E, SERP1, GE, ELANE and belongs to the peptidase S1 family. It is a 33-kDa enzyme with several isoforms that differ in their extent of glycosylation (PMID:12223222). Human neutrophil elastase (HNE) is a serine protease with potent proteolytic activity (3), which is reported to cause mucin secretion (degranulation) (PMID:12169572). It may contribute to the directed migration of leukocytes into flamed postcapillary venules in addition to contributing to the process of tissue emigration (PMID:9683424). The full length protein has a signal peptide, propeptide and three glycosylation sites.

## Storage

**Storage:**  
Store at 2-8°C. Avoid exposure to light. Stable for one year after shipment.

**Storage Buffer:**  
PBS with 0.09% sodium azide, pH7.3

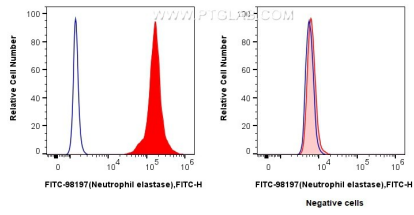
For technical support and original validation data for this product please contact:

T: 1 (888) 4PTGLAB (1-888-478-4522) (toll free in USA), or 1(312) 455-8498 (outside USA)

E: [proteintech@ptglab.com](mailto:proteintech@ptglab.com)  
W: [ptglab.com](http://ptglab.com)

This product is exclusively available under Proteintech Group brand and is not available to purchase from any other manufacturer.

## Selected Validation Data



$1 \times 10^6$  mouse bone marrow cells (left) or NIH/3T3 cells (right) were intracellularly stained with 0.25 ug FITC Plus Anti-Mouse Neutrophil elastase Rabbit RecAb (FITC-98197, Clone: 241842G3) (red) or FITC Plus Rabbit IgG Isotype Control RecAb (FITC-98136, Clone: 240953C9) (blue). Cells were fixed with 4% PFA and permeabilized with Flow Cytometry Perm Buffer (PF00011-C).