

# FITC-conjugated HBE1-Specific Monoclonal antibody

Catalog Number: **FITC-66151**

## Basic Information

<b>Catalog Number:</b> FITC-66151	<b>GenBank Accession Number:</b> NM_005330	<b>Purification Method:</b> Protein G purification
<b>Size:</b> 100ul , Concentration: 500 µg/ml by Nanodrop;	<b>GeneID (NCBI):</b> 3046	<b>CloneNo.:</b> 2C11G6
<b>Source:</b> Mouse	<b>Full Name:</b> hemoglobin, epsilon 1	<b>Excitation/Emission maxima wavelengths:</b> 494 nm / 520 nm
<b>Isotype:</b> IgG1	<b>Observed MW:</b> 16 kDa	

## Applications

**Tested Applications:**  
FC (Intra)

**Species Specificity:**  
human

## Background Information

The hemoglobin molecule is a tetramer consisting of two  $\alpha$ -globin-like polypeptide chains and two  $\beta$ -globin-like chains. The human hemoglobin genes are expressed in a tightly developmentally controlled fashion.  $\epsilon$ -globin (HBE1) is the predominantly expressed gene during the embryonic stage. The epsilon hemoglobin chain seems to be the best marker for fetal nucleated red blood cells (NRBCs). Anti-HBE1 may be used to label and isolate fetal cells from maternal blood and can be useful in prenatal diagnosis. This antibody specifically recognizes the HBE1 and doesn't cross-react with other globin chains. This antibody is conjugated with FITC.

## Storage

**Storage:**  
Store at -20°C. Avoid exposure to light. Stable for one year after shipment.

**Storage Buffer:**  
PBS with 50% Glycerol, 0.05% Proclin300, 0.5% BSA, pH 7.3.

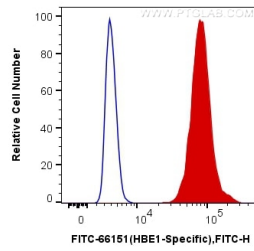
**Aliquoting is unnecessary for -20°C storage**

**\*\*\* 20ul sizes contain 0.1% BSA**

For technical support and original validation data for this product please contact:  
T: 1 (888) 4PTGLAB (1-888-478-4522) (toll free in USA), or 1(312) 455-8498 (outside USA)  
E: [proteintech@ptglab.com](mailto:proteintech@ptglab.com)  
W: [ptglab.com](http://ptglab.com)

This product is exclusively available under Proteintech Group brand and is not available to purchase from any other manufacturer.

## Selected Validation Data



1X10<sup>6</sup> K-562 cells were intracellularly stained with 0.4 ug FITC Anti-Human HBE1-Specific (FITC-66151, Clone:2C11G6) (red), or 0.4 ug Control Antibody. Cells were fixed with 4% PFA and permeabilized with Flow Cytometry Perm Buffer (PF00011-C).