

For Research Use Only

FITC Plus Anti-Human CD85j / LILRB1 (GHI/75) Mouse IgG2a Recombinant Antibody

Catalog Number: FITC-65623



Basic Information

Catalog Number:

FITC-65623

Size:

100 tests, 5 ul/test

Source:

Mouse

Isotype:

IgG2a

GenBank Accession Number:

BC015731

GeneID (NCBI):

10859

Full Name:

leukocyte immunoglobulin-like receptor, subfamily B (with TM and ITIM domains), member 1

Calculated MW:

71 kDa

Purification Method:

Protein A purification

CloneNo.:

GHI/75

Excitation/Emission maxima wavelengths:

495 nm / 524 nm

Applications

Tested Applications:

FC

Species Specificity:

human

Background Information

LILRB1, also named as CD85j or ILT2, includes four C2 Ig domains binding HLA class I molecules in the extracellular region and a cytoplasmic domain containing four immunoreceptor tyrosine-based inhibition motifs (ITIM). LILRB1 is a surface glycoprotein detected on the surface of B cells, monocytes, dendritic cells, T cells and NK cells.

Storage

Storage:

Store at 2-8°C. Avoid exposure to light. Stable for one year after shipment.

Storage Buffer:

PBS with 0.09% sodium azide and 0.5% BSA.

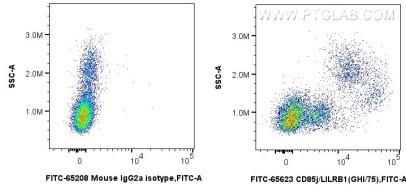
For technical support and original validation data for this product please contact:

T: 1 (888) 4PTGLAB (1-888-478-4522) (toll free in USA), or 1(312) 455-8498 (outside USA)

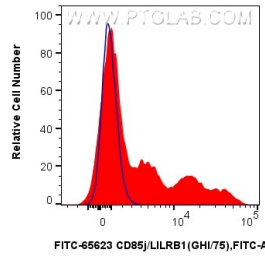
E: proteintech@ptglab.com
W: ptglab.com

This product is exclusively available under Proteintech Group brand and is not available to purchase from any other manufacturer.

Selected Validation Data



1x10⁶ human PBMCs were surface stained with 5 ul FITC Plus Anti-Human CD85j / LILRB1 (GHI/75) Mouse IgG2a RecAb (FITC-65623, Clone: GHI/75), or FITC Plus Mouse IgG2a Isotype Control (C1.18.4) (FITC-65208, Clone: C1.18.4). Cells were incubated with FC Receptor Block prior to staining. Cells were not fixed.



1x10⁶ human PBMCs were surface stained with 5 ul FITC Plus Anti-Human CD85j / LILRB1 (GHI/75) Mouse IgG2a RecAb (FITC-65623, Clone: GHI/75) (red), or FITC Plus Mouse IgG2a Isotype Control (C1.18.4) (FITC-65208, Clone: C1.18.4) (blue). Cells were incubated with FC Receptor Block prior to staining. Cells were not fixed.