

For Research Use Only

FITC Plus Anti-Human CD29 (TS2/16) Mouse IgG2a Recombinant Antibody

Catalog Number: FITC-65601



Basic Information

Catalog Number:

FITC-65601

Size:

100 tests, 5 ul/test

Source:

Mouse

Isotype:

IgG2a

GenBank Accession Number:

BC020057

GeneID (NCBI):

3688

ENSEMBL Gene ID:

ENSG00000150093

Full Name:

integrin, beta 1 (fibronectin receptor,
beta polypeptide, antigen CD29
includes MDF2, MSK12)

Calculated MW:

88 kDa

Purification Method:

Protein A purification

CloneNo.:

TS2/16

**Excitation/Emission maxima
wavelengths:**

495 nm / 524 nm

Applications

Tested Applications:

FC

Species Specificity:

human

Background Information

Integrin beta-1 (ITGB1), also named as CD29, is a 130 kDa single chain type I glycoprotein that is expressed in a heterodimeric complex with one of six distinct α subunits, comprising the very late activation antigen (VLA) subfamily of adhesion receptors. It is one of the essential surface molecules expressed on human MSC from bone marrow and other sources. The β 1 subunit is also broadly expressed on lymphocytes and monocytes, weakly expressed on granulocytes, and not expressed on erythrocytes. These receptors are involved in a variety of cell-cell and cell-matrix interactions.

Storage

Storage:

Store at 2-8°C. Avoid exposure to light. Stable for one year after shipment.

Storage Buffer:

PBS with 0.09% sodium azide and 0.5% BSA.

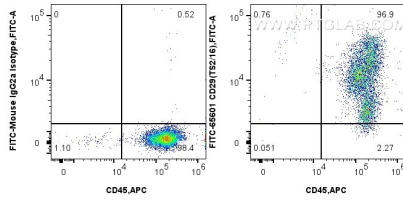
For technical support and original validation data for this product please contact:

T: 1 (888) 4PTGLAB (1-888-478-4522) (toll free
in USA), or 1(312) 455-8498 (outside USA)

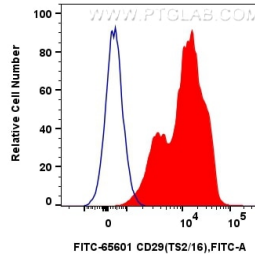
E: proteintech@ptglab.com
W: ptglab.com

This product is exclusively available under Proteintech Group brand and is not available to purchase from any other manufacturer.

Selected Validation Data



1x10⁶ human PBMCs were surface stained with APC Anti-Human CD45, and 5 ul FITC Plus Anti-Human CD29 (TS2/16) Mouse IgG2a Recombinant Antibody (FITC-65601, Clone: TS2/16) or FITC Plus Mouse IgG2a Isotype Control (C1.18.4) (FITC-65208, Clone: C1.18.4). Cells were incubated with FC Receptor Block prior to staining. Cells were not fixed.



1x10⁶ human PBMCs were surface stained with 5 ul FITC Plus Anti-Human CD29 (TS2/16) Mouse IgG2a Recombinant Antibody (FITC-65601, Clone: TS2/16) or FITC Plus Mouse IgG2a Isotype Control (C1.18.4) (FITC-65208, Clone: C1.18.4). Cells were co-stained with APC Anti-Human CD45 (HI30) (APC-65109, Clone: HI30). Cells were incubated with FC Receptor Block prior to staining. Cells were not fixed.