

For Research Use Only



# FITC Plus Anti-Human CD163 (GHI/61) Mouse IgG1 Recombinant Antibody

Catalog Number: **FITC-65522**

## Basic Information

Catalog Number:

FITC-65522

Size:

100 tests, 5 µl/test

Source:

Mouse

Isotype:

IgG1

GenBank Accession Number:

BC051281

GeneID (NCBI):

9332

ENSEMBL Gene ID:

ENSG00000177575

Full Name:

CD163 molecule

Calculated MW:

1156 aa, 125 kDa

Purification Method:

Affinity purification

CloneNo.:

GHI/61

Excitation/Emission maxima  
wavelengths:

495 nm / 524 nm

## Applications

Tested Applications:

FC

Species Specificity:

Human

## Background Information

CD163, also known as M130, is a membrane glycoprotein that belongs to the scavenger receptor superfamily (PMID: 8370408). It is an acute phase-regulated and signal-inducing macrophage protein expressed exclusively in monocytes and tissue macrophages (PMID: 11196644). CD163 mediates endocytosis of haptoglobin-haemoglobin complexes (PMID: 11196644). The uptake of haptoglobin by macrophages contributes to the recycling of iron and also to the inflammatory response (PMID: 22900885). Soluble CD163 (sCD163), as a result of ectodomain shedding during inflammatory activation of macrophages, circulates in blood and has been suggested as a plasma/serum marker for macrophage activity (PMID: 12570164).

## Storage

Storage:

Store at 2-8°C. Avoid exposure to light. Stable for one year after shipment.

Storage Buffer:

PBS with 0.09% sodium azide and 0.5% BSA.

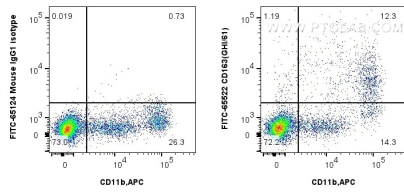
For technical support and original validation data for this product please contact:

T: 1 (888) 4PTGLAB (1-888-478-4522) (toll free  
in USA), or 1(312) 455-8498 (outside USA)

E: [proteintech@ptglab.com](mailto:proteintech@ptglab.com)  
W: [ptglab.com](http://ptglab.com)

**This product is exclusively available under Proteintech Group brand and is not available to purchase from any other manufacturer.**

## Selected Validation Data



1x10<sup>6</sup> human PBMCs were surface stained with 5 ul FITC Plus Anti-Human CD163 Mouse Recombinant Antibody (FITC-6522, Clone: GHI/61) or FITC Plus Mouse IgG1 Isotype Control (MOPC-21) (FITC-6524, Clone: MOPC-21), and 5 ul APC Anti-Human CD11b (ICRF44) (APC-65116, Clone: ICRF44). Cells were incubated with FC Receptor Block prior to staining. Cells were not fixed.