

For Research Use Only

FITC Plus Anti-Human CD68 (KP1) Rabbit Recombinant Antibody



Catalog Number: FITC-65515

Basic Information

Catalog Number:

FITC-65515

Size:

100 tests, 5 µl/test

Source:

Rabbit

Isotype:

IgG

GenBank Accession Number:

BC015557

GeneID (NCBI):

968

UNIPROT ID:

P34810

Full Name:

CD68 molecule

Calculated MW:

37 kDa

Purification Method:

Affinity purification

CloneNo.:

KP1

Excitation/Emission maxima
wavelengths:

495 nm / 524 nm

Applications

Tested Applications:

FC (Intra)

Species Specificity:

Human

Background Information

CD68 is a type I transmembrane glycoprotein that is highly expressed by human monocytes and tissue macrophages. It belongs to the lysosomal/endosomal-associated membrane glycoprotein (LAMP) family and primarily localizes to lysosomes and endosomes with a smaller fraction circulating to the cell surface. CD68 is also a member of the scavenger receptor family. It may play a role in phagocytic activities of tissue macrophages.

Storage

Storage:

Store at 2-8°C. Avoid exposure to light. Stable for one year after shipment.

Storage Buffer:

PBS with 0.09% sodium azide and 0.5% BSA.

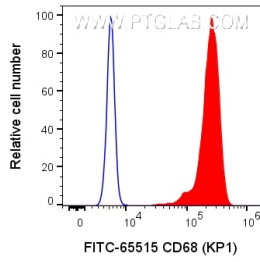
For technical support and original validation data for this product please contact:

T: 1 (888) 4PTGLAB (1-888-478-4522) (toll free
in USA), or 1(312) 455-8498 (outside USA)

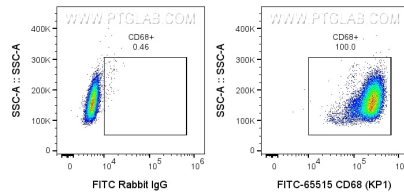
E: proteintech@ptglab.com
W: ptglab.com

This product is exclusively available under Proteintech Group brand and is not available to purchase from any other manufacturer.

Selected Validation Data



1x10⁶ human PBMCs were intracellularly stained with 5 ul FITC Plus Anti-Human CD68 Rabbit Recombinant Antibody (FITC-65515, Clone:KP1) or FITC-conjugated Rabbit IgG control PolyAb (FITC-30000). Cells were fixed and permeabilized with Transcription Factor Staining Buffer Kit (PF00011). Cells were treated with FC Receptor Block prior to staining.



1x10⁶ human PBMCs were intracellularly stained with 5 ul FITC Plus Anti-Human CD68 Rabbit Recombinant Antibody (FITC-65515, Clone:KP1) or FITC-conjugated Rabbit IgG control PolyAb (FITC-30000). Cells were fixed and permeabilized with Transcription Factor Staining Buffer Kit (PF00011). Cells were treated with FC Receptor Block prior to staining.