

For Research Use Only

FITC Plus Anti-Human HLA-DR (L243) Rabbit Recombinant Antibody



Catalog Number: FITC-65503

Basic Information

Catalog Number:

FITC-65503

Size:

100 tests, 5 µl/test

Source:

Rabbit

Isotype:

IgG

GenBank Accession Number:

BC032350

GeneID (NCBI):

3122

ENSEMBL Gene ID:

ENSG00000204287

Full Name:

major histocompatibility complex,
class II, DR alpha

Calculated MW:

254 aa, 29 kDa

Purification Method:

Affinity purification

CloneNo.:

L243

Excitation/Emission maxima
wavelengths:

495 nm / 524 nm

Applications

Tested Applications:

FC

Species Specificity:

Human

Background Information

HLA-DR is a member of MHC class II molecules encoded by the human leukocyte antigen complex on the region 6p21.31 of chromosome 6. HLA-DR is composed of two non-covalently associated transmembrane glycoproteins (the α and β chains), and is primarily expressed on B lymphocytes, monocytes, dendritic cells and thymic epithelial cells (PMID: 33125816). HLA-DR participate in the antigen presentation to CD4+ or CD8+ T cells and is postulated as a general biomarker of sepsis-induced immunosuppression (PMID: 28199206, 32421903). The Anti-Human HLA-DR antibody, clone L243, is derived from Human lymphoblastoid B-cell line RPMI 8866.

Storage

Storage:

Store at 2-8°C. Avoid exposure to light. Stable for one year after shipment.

Storage Buffer:

PBS with 0.09% sodium azide and 0.5% BSA.

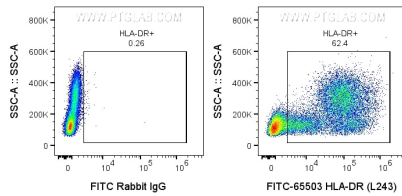
For technical support and original validation data for this product please contact:

T: 1 (888) 4PTGLAB (1-888-478-4522) (toll free
in USA), or 1(312) 455-8498 (outside USA)

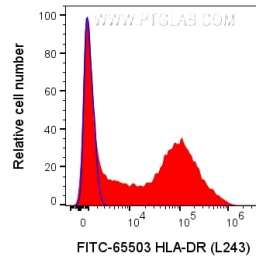
E: proteintech@ptglab.com
W: ptglab.com

This product is exclusively available under Proteintech Group brand and is not available to purchase from any other manufacturer.

Selected Validation Data



1×10^6 human PBMCs were surface stained with 5 μ l FITC Plus Anti-Human HLA-DR Rabbit Recombinant Antibody (FITC-65503, Clone:L243) or FITC-conjugated Rabbit IgG control PolyAb (FITC-30000). Cells were not fixed. Cells were treated with FC Receptor Block prior to staining. Lymphocytes and monocytes were gated.



1×10^6 human PBMCs were surface stained with 5 μ l FITC Plus Anti-Human HLA-DR Rabbit Recombinant Antibody (FITC-65503, Clone:L243) or FITC-conjugated Rabbit IgG control PolyAb (FITC-30000). Cells were not fixed. Cells were treated with FC Receptor Block prior to staining. Lymphocytes and monocytes were gated.