

For Research Use Only

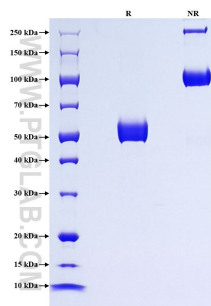
Recombinant Human OLR1/LOX1 protein (rFc Tag)

Catalog Number: Eg2911



Basic Information	Species: Human	Purity: >90 %, SDS-PAGE	Tag: rFc Tag
Technical Specifications	<p>Purity: >90 %, SDS-PAGE</p> <p>Endotoxin Level: <0.1 EU/µg protein, LAL method</p> <p>Source: HEK293-derived Human OLR1 protein Ser61-Gln273 (Accession# P78380-1) with a rabbit IgG Fc tag at the C-terminus.</p> <p>GeneID: 4973</p> <p>Accession: P78380-1</p> <p>Predicted Molecular Mass: 50.4 kDa</p> <p>SDS-PAGE: 48-60 kDa, reducing (R) conditions</p> <p>Formulation: Lyophilized from 0.22 µm filtered solution in PBS, pH 7.4. Normally 5% trehalose and 5% mannitol are added as protectants before lyophilization.</p>		
Biological Activity	Not tested		
Storage and Shipping	<p>Storage: It is recommended that the protein be aliquoted for optimal storage. Avoid repeated freeze-thaw cycles.</p> <ul style="list-style-type: none">• Until expiry date, -20°C to -80°C as lyophilized proteins.• 3 months, -20°C to -80°C under sterile conditions after reconstitution. <p>Shipping: The product is shipped at ambient temperature. Upon receipt, store it immediately at the recommended temperature.</p>		
Reconstitution	Briefly centrifuge the tube before opening. Reconstitute at 0.1-0.5 mg/mL in sterile water.		
Background	<p>OLR1/LOX-1 acts as a receptor, in the form of homodimer, that mediates the recognition, internalization, and degradation of oxidatively modified low density lipoprotein (oxLDL). OLR1 is predominantly expressed in endothelial cells and vascular-rich organs such as the placenta, lung, liver, and brain. OLR1 is a protein containing 273 amino acids with a calculated molecular mass of 31 kDa but an apparent molecular mass of 50 kDa, which may result from the glycosylation of four potential N-linked glycosylation sites located at the C-terminal domain.</p>		
References	<p>1. Sawamura T, et al. (1997). Nature. Mar 6;386(6620):73-77. 2. Park H, et al. (2005). J Biol Chem. 280(14):13593-13599. 3. Yamanaka S, et al. (1998). Genomics. Dec 1;54(2):191-9.</p>		
Synonyms	OLR1, CLEC8A, C-type lectin domain family 8 member A, hLOX 1, hLOX1		
For technical support and original validation data for this product please contact			
T: 1 (888) 4PTGLAB (1-888-478-4522) (toll free in USA), or 1(312) 455-8498 (outside USA)		E: proteintech@ptglab.com W: ptglab.com	
		This product is exclusively available under Proteintech Group brand and is not available to purchase from any other manufacturer.	

Selected Validation Data



Purity of Recombinant Human OLR1 was determined by SDS-PAGE. The protein was resolved in an SDS-PAGE in reducing (R) and non-reducing (NR) conditions and stained using Coomassie blue.