

For Research Use Only

Recombinant Human Complement component C7/C7 protein (His Tag)



Catalog Number: Eg1202

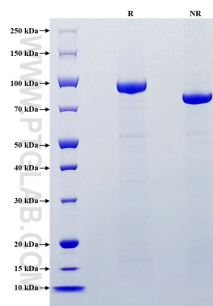
Basic Information	Species: Human	Purity: >90 %, SDS-PAGE	Tag: His Tag
Technical Specifications	<p>Purity: >90 %, SDS-PAGE</p> <p>Endotoxin Level: <1.0 EU/μg protein, LAL method</p> <p>Source: HEK293-derived Human Complement component C7/C7 protein Ser23-Gln843 (Accession# P10643) with a His tag at the C-terminus.</p> <p>GeneID: 730</p> <p>Accession: P10643</p> <p>Predicted Molecular Mass: 92.2 kDa</p> <p>SDS-PAGE:</p> <p>Formulation: Lyophilized from sterile PBS, pH 7.4. Normally 5% trehalose and 5% mannitol are added as protectants before lyophilization.</p>		
Biological Activity	Not tested		
Storage and Shipping	<p>Storage: It is recommended that the protein be aliquoted for optimal storage. Avoid repeated freeze-thaw cycles.</p> <ul style="list-style-type: none">• Until expiry date, -20°C to -80°C as lyophilized proteins.• 3 months, -20°C to -80°C under sterile conditions after reconstitution. <p>Shipping: The product is shipped at ambient temperature. Upon receipt, store it immediately at the recommended temperature.</p>		
Reconstitution	Briefly centrifuge the tube before opening. Reconstitute at 0.1-0.5 mg/mL in sterile water.		
Background			
References			
Synonyms	C7, complement component 7, Complement component C7		

For technical support and original validation data for this product please contact

T: 1 (888) 4PTGLAB (1-888-478-4522) (toll free in USA), or 1(312) 455-8498 (outside USA) E: proteintech@ptglab.com W: ptglab.com

This product is exclusively available under Proteintech Group brand and is not available to purchase from any other manufacturer.

Selected Validation Data



Purity of Recombinant Human Complement component C7/C7 was determined by SDS-PAGE. The protein was resolved in an SDS-PAGE in reducing (R) and non-reducing (NR) conditions and stained using Coomassie blue.