

For Research Use Only

Cardinal Red™ Anti-Human CD235a (HIR2)



Catalog Number: **CR-65174**

Basic Information

| | | |
|--------------------------------------|--|---|
| Catalog Number: CR-65174 | GenBank Accession Number: BC005319 | Purification Method: Affinity purification |
| Size: 100tests , 5 µl/test | GeneID (NCBI): 2993 | CloneNo.: HIR2 |
| Source: Mouse | UNIPROT ID: P02724 | Excitation/Emission maxima wavelengths: 592 nm / 611 nm |
| Isotype: IgG2b, kappa | Full Name: glycophorin A (MNS blood group) | |
| | Calculated MW: 150 aa, 16 kDa | |

Applications

Tested Applications:
FC

Species Specificity:
Human

Background Information

Glycophorin A (GYPA) is the major transmembrane sialoglycoprotein in erythrocytes. It is a dimeric type I transmembrane protein carrying 15 closely clustered O-linked tetrasaccharides capped with sialic acid/N-acetylneuraminic acid (Neu5Ac). This 36 kDa protein represents the major sialoglycoprotein of the red blood cell membrane displaying about one million copies per cell. (PMID: 9490702)

Storage

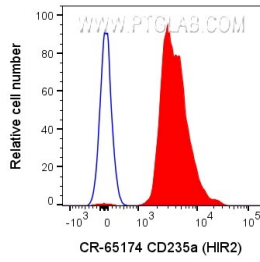
Storage:
Store at 2-8°C. Avoid exposure to light. Stable for one year after shipment.

Storage Buffer:
PBS with 0.09% sodium azide and 0.5% BSA.

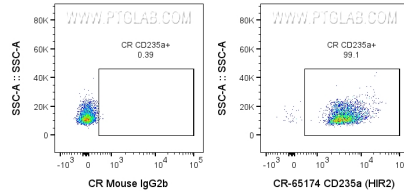
For technical support and original validation data for this product please contact:
T: 1 (888) 4PTGLAB (1-888-478-4522) (toll free in USA), or 1(312) 455-8498 (outside USA) E: proteintech@ptglab.com
W: ptglab.com

This product is exclusively available under Proteintech Group brand and is not available to purchase from any other manufacturer.

Selected Validation Data



10 ul human whole blood was surface stained with 5 ul Cardinal Red™ Anti-Human CD235a (HIR2) (CR-65174) or Cardinal Red™ Mouse IgG2b Isotype Control. Cells were not fixed. Red blood cells were gated.



10 ul human whole blood was surface stained with 5 ul Cardinal Red™ Anti-Human CD235a (HIR2) (CR-65174) or Cardinal Red™ Mouse IgG2b Isotype Control. Cells were not fixed. Red blood cells were gated.